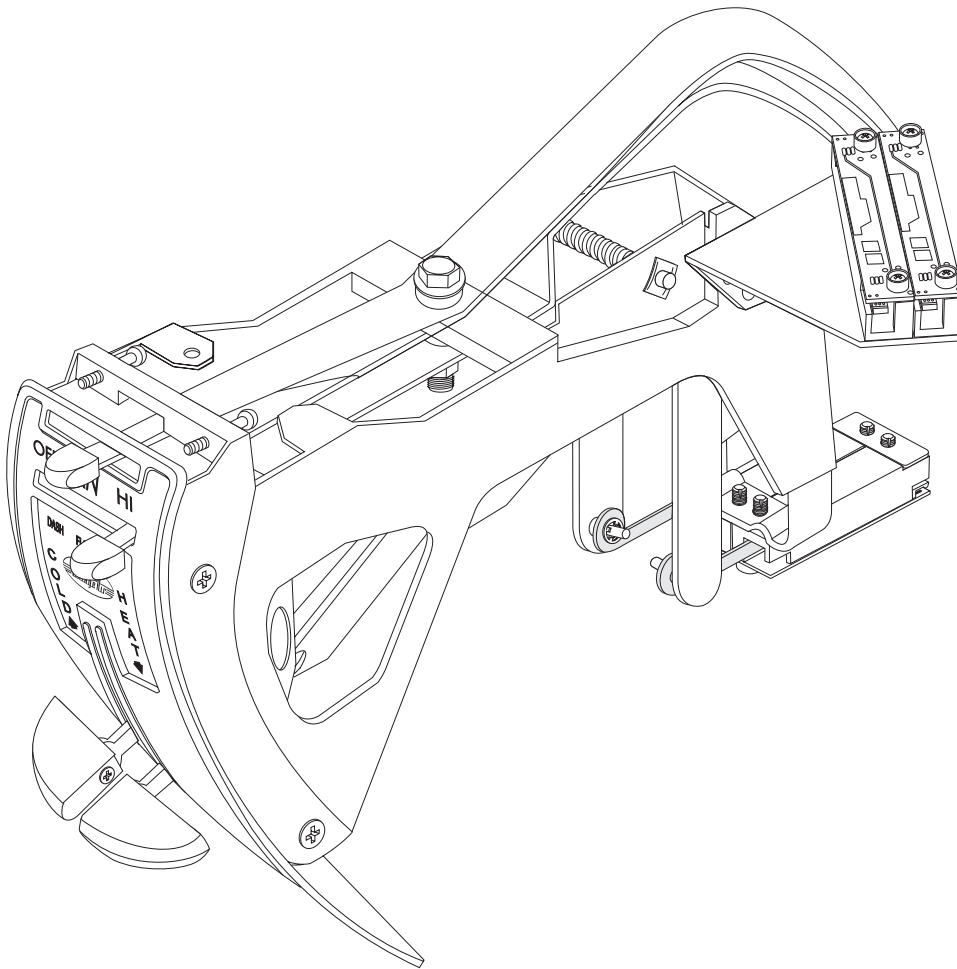




1955 & 56 CHEVY

CONTROL PANEL CONVERSION KIT
473055-PCA



18865 GOLL ST. - SAN ANTONIO, TX. - 78266 ph.210-654-7171 - fax 210-654-3113



Table of Contents

PAGES

1. COVER
2. TABLE OF CONTENTS
3. CONTROL PANEL CONVERSION KIT PACKING LIST
4. DISASSEMBLY FIGURE 1
5. OFF-SET BRACKET RELOCATION FIGURE 2-2b
BLOWER & MODE LEVER INSTALLATION
6. BLOWER & MODE LEVER INSTALLATION CONT. FIGURE 3
UPPER LEVER POT BRACKET INSTALLATION FIGURE 4
7. BLOWER & MODE SLIDE POT INSTALLATION FIGURE 5 & 5a
8. COLD & HEAT SLIDE POT ASSEMBLY FIGURE 6-7a
9. 1955 SLIDE POT INSTALLATION FIGURES 8 & 9
10. 1956 SLIDE POT INSTALLATION FIGURES 10 & 11
11. LOWER POT BRACKET INSTALLATION FIGURE 12
BEZEL AND PLACARD INSTALLATION FIGURE 13
12. KNOB INSTALLATION FIGURE 14
13. CONTROL PANEL CONVERSION KIT PACKING LIST



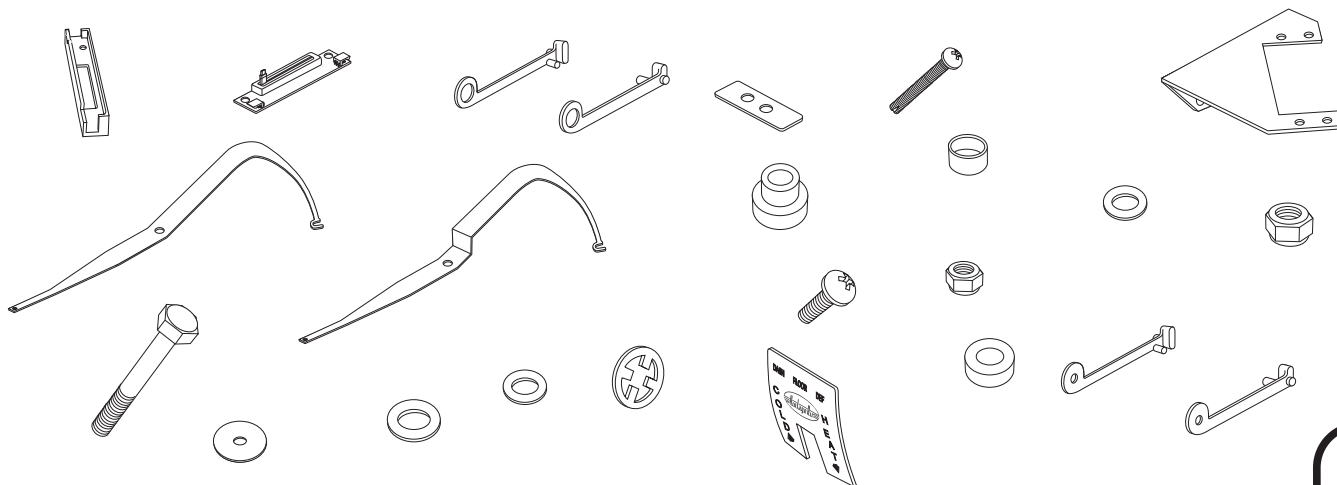
1955 & 56 CHEVY CONTROL PANEL CONVERSION

1955 & 56 CHEVY CONTROL PANEL CONVERSION PACKING LIST

CONVERSION KIT
473055-PCA

No.	QTY.	PART No.	DESCRIPTION
1.	4	496000-PFR	CAST POT HOLDER
2.	4	246106-PUA	SLIDE POT PC BOARD ASM
3.	1	491000-SLR	55 CHEVY LL/AC CAST PUSH ROD
4.	1	491001-SLR	55 CHEVY LR/HEAT CAST PUSH ROD
5.	1	649002-PCB	55-56 CHEVY LOWER POT BRKT
6.	8	181125-PSR	#8 x 1.25" SELF TAPPING SCREW
7.	8	186005-JSR	#8 NYLON CUP WASHER
8.	1	649003-PCB	55-56 CHEVY UPPER POT BRKT
9.	1	491004-SLR	55-56 CHEVY BLOWER LEVER
10.	1	491005-SLR	55-56 CHEVY MODE LEVER
11.	2	180007-SSR	NYLON SHOULDER SPACER
12.	2	180006-SSR	NYLON SPACER
13.	2	18028-VUB	5/16 FENDER WASHER
14.	1	18151-VUB	5/16-18 NYLON LKNUT
15.	1	18312-VUB	5/16-18 x 1 3/4 HEX BOLT
16.	2	49705-VUI	NYLON FLAT WASHER 1/8
17.	2	65975-VUE	1/8" PUSH ON RING
18.	6	18237-VUB	6-32 x 3/8" PAN MS
19.	6	18107-VUB	6-32 NYLON LOCKNUT
20.	1	491002-SLR	56 CHEVY LL/AC CAST PUSHROD
21.	1	491003-SLR	56 CHEVY LR/HEAT CAST PUSHROD
22.	2	186003-JSR	.141 ID x .625 OD x .031 WASHER
23.	2	186004-JSR	.44 ID x .65 OD x .125 NYLON WASHER
24.	1	48401-PCR	55-56 CHEVY PLACARD

**** BEFORE BEGINNING INSTALLATION OPEN ALL PACKAGES AND CHECK CONTENTS OF SHIPMENT. PLEASE REPORT ANY SHORTAGES DIRECTLY TO VINTAGE AIR WITHIN 15 DAYS. AFTER 15 DAYS, VINTAGE AIR WILL NOT BE RESPONSIBLE FOR MISSING OR DAMAGED ITEMS.**





1955 & 56 CONTROL PANEL CONVERSION

- REMOVE CONTROL KNOBS. (RETAIN)
- REMOVE BLOWER SWITCH AND DISCARD.
- REMOVE CONTROL PANEL BEZEL. (RETAIN)
- REMOVE PLACARD AND DISCARD.
- REMOVE INSIDE/OUTSIDE AIR LEVER BY REMOVING RETAINING CLIP AND STUD. (DISCARD)
- USE A DRILL OR A DREMEL TOOL TO REMOVE THE TWO CABLE BRACKET RETAINING RIVETS,
- REMOVE BRACKET AND DISCARD. (AS SHOWN BELOW, SEE FIGURE 1)

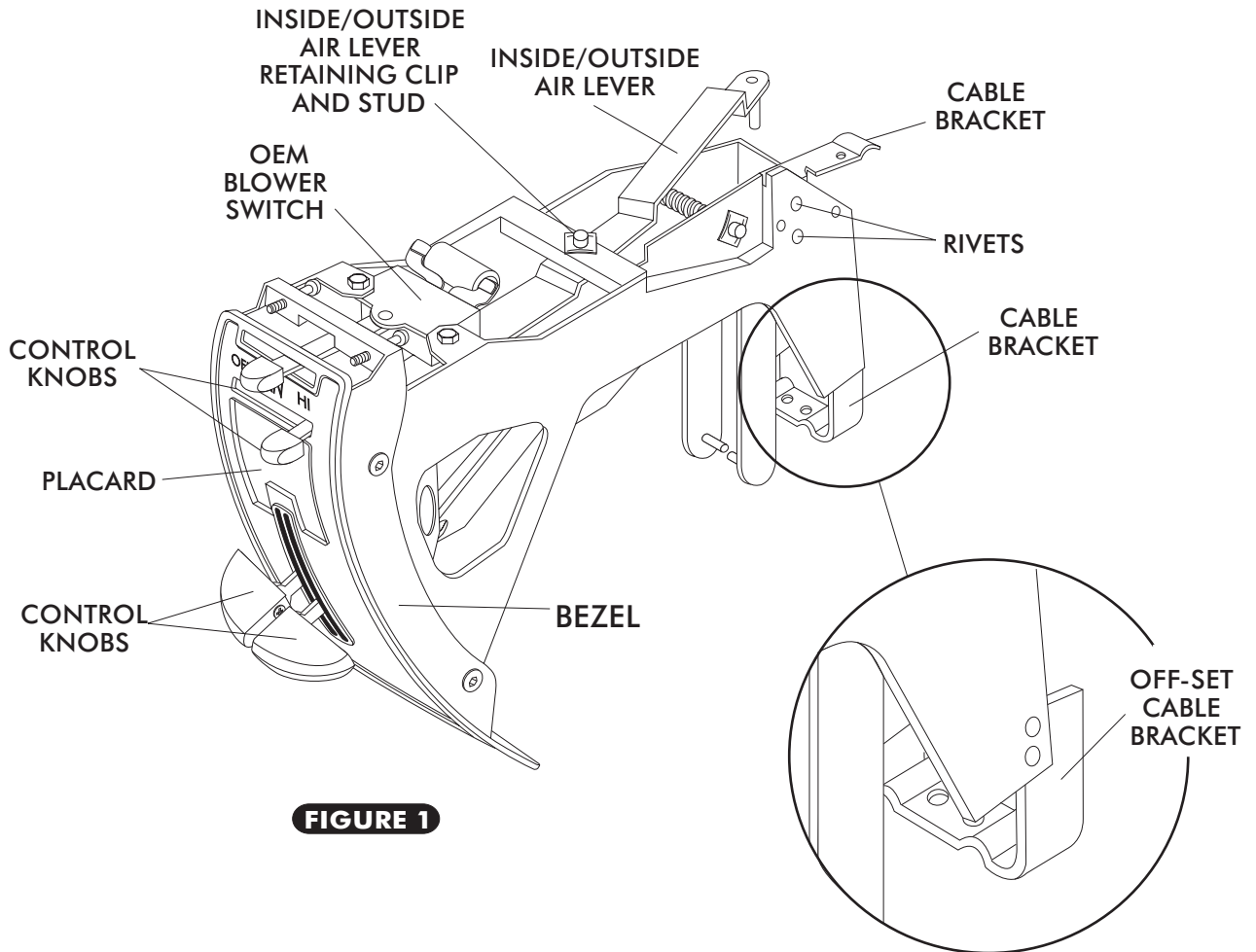


FIGURE 1

NOTE: SOME CONTROL PANELS HAVE AN OFF-SET CABLE BRACKET WHICH MUST BE RELOCATED. SEE PAGE 5 FOR RELOCATING INSTRUCTIONS.



CABLE BRACKET RELOCATION

- USING A 1/8", DRILL BIT REMOVE THE (4) O.E.M. MOUNTING RIVETS SEE FIGURE 2 BELOW.
- ONCE RIVETS HAVE BEEN REMOVED SLIDE THE CABLE BRACKET FORWARD, ALIGNING THE BACK SIDE OF THE BRACKET FLUSH WITH THE CONTROL PANEL AS SHOWN IN FIGURE 2a.
- MARK MOUNTING HOLES ON O.E.M. CABLE BRACKET, REMOVE BRACKET AND DRILL (4) 9/64" MOUNTING HOLES IN CABLE BRACKET.

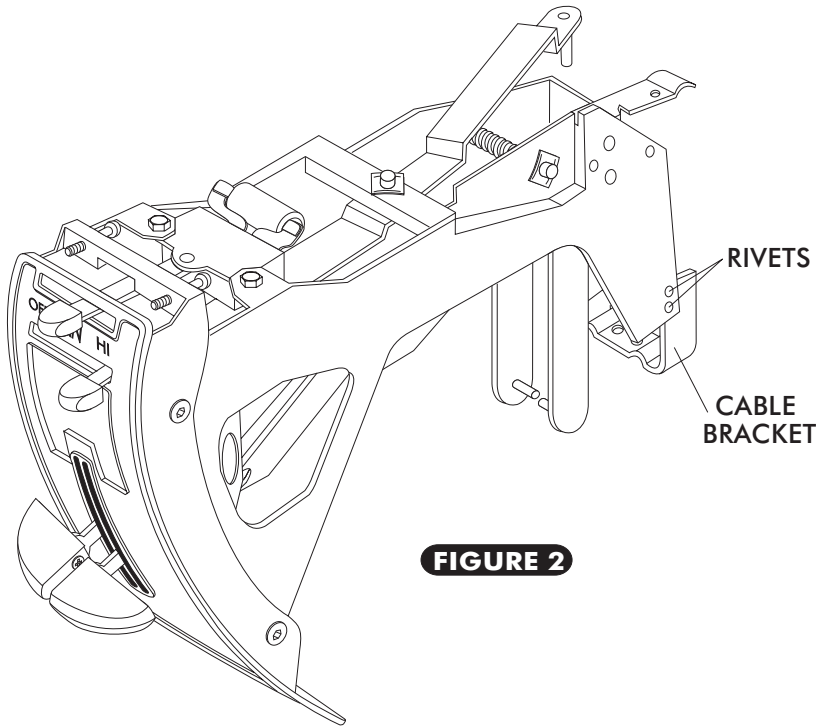


FIGURE 2

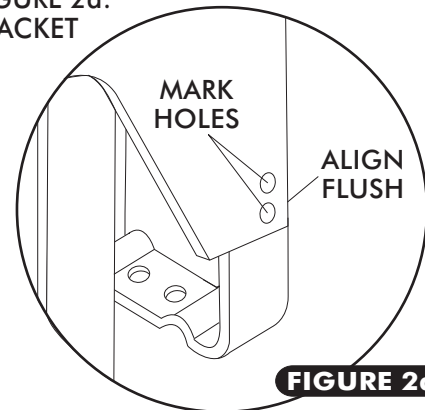
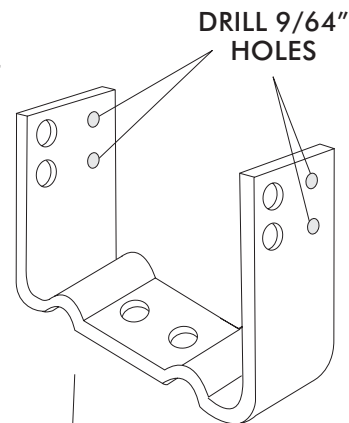


FIGURE 2a



- USING (4) 6-32 x 3/8 PH MACHINE SCREWS AND NYLOCK NUTS ATTACH THE CABLE BRACKET AS SHOWN IN FIGURE 2b.

(2) 18237-VUB
6-32 x 3/8 PH
MACHINE SCREW

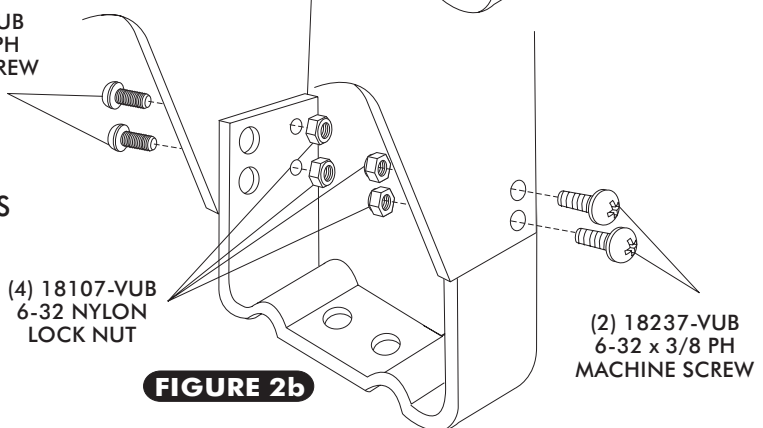


FIGURE 2b

(2) 18237-VUB
6-32 x 3/8 PH
MACHINE SCREW

BLOWER & MODE LEVER INSTALLATION

- USING A 5/16-18 x 1.750 HEX BOLT, (2) AN WASHERS, (2) NYLON SPACERS, (2) NYLON SHOULDER SPACERS, AND NYLOCK NUT; INSTALL THE BLOWER & MODE LEVERS AS SHOWN IN FIGURE 3 & 3a, PAGE 6.



1955 & 56 CHEVY CONTROL PANEL CONVERSION

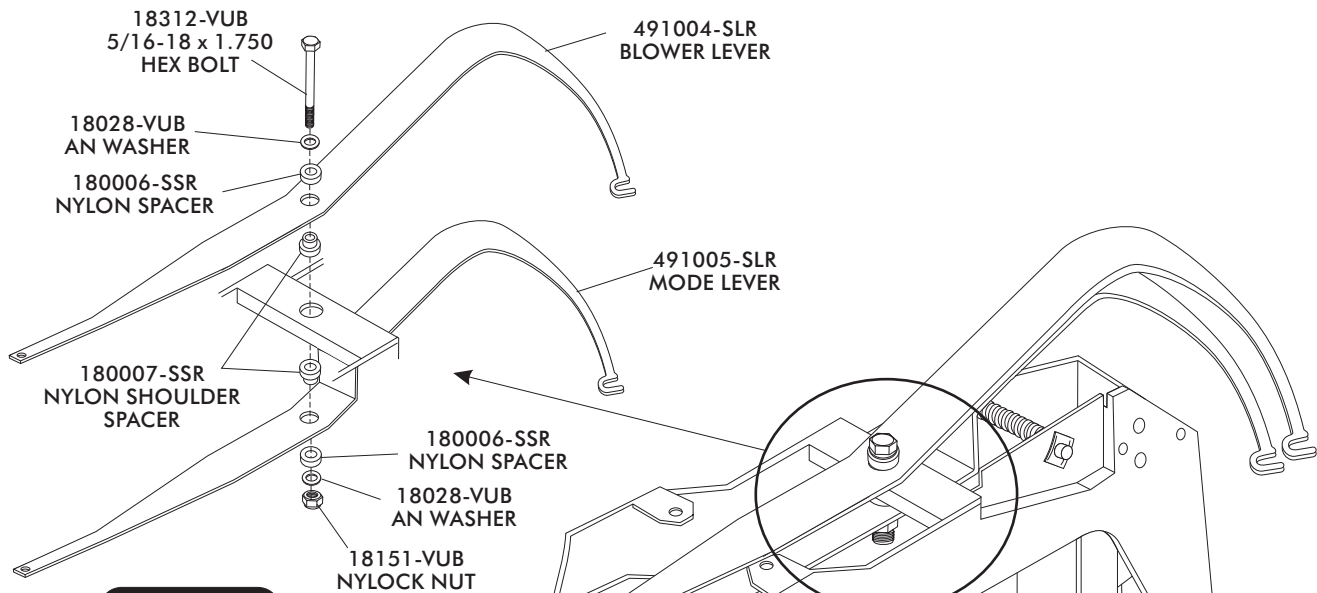


FIGURE 3a

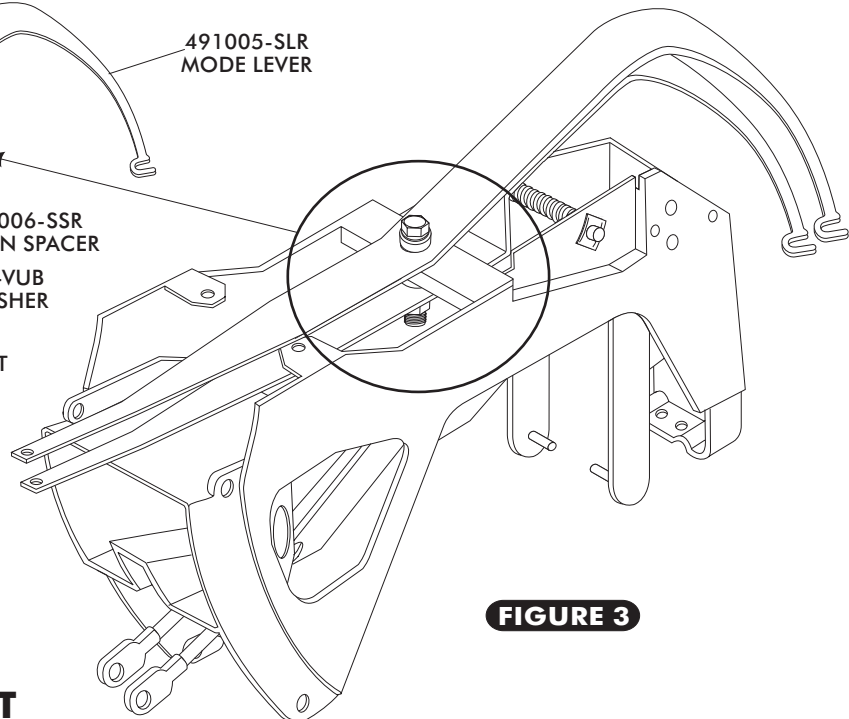


FIGURE 3

UPPER LEVER POT BRACKET INSTALLATION

- USING (2) 6-32 x 3/8" PH MACHINE SCREWS & 6-32 NYLON LOCK NUTS, INSTALL THE UPPER LEVER POT BRACKET AS SHOWN IN FIGURE 4.

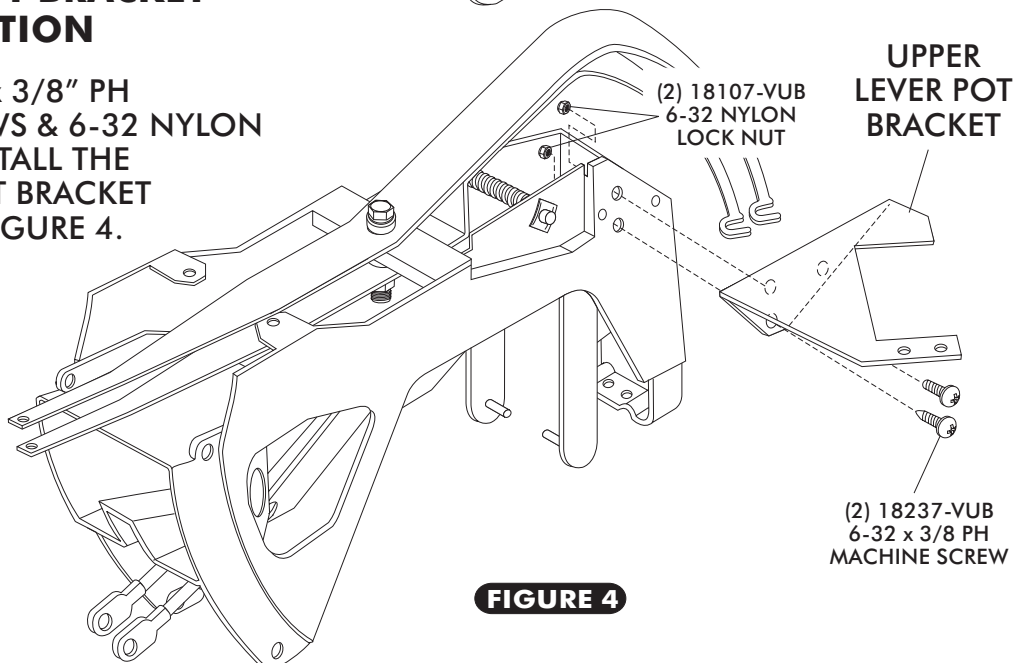


FIGURE 4



BLOWER & MODE SLIDE POT INSTALLATION

- ❑ INSTALL SLIDE POT PC BOARD ASSEMBLY AND CAST POT HOLDERS AS SHOWN IN FIGURE 5.
- ❑ PLACE THE CAST POT HOLDER ON BRACKET, WITH THE BLOWER LEVER PLACED INSIDE THE CAST POT HOLDER AS SHOWN. **NOTE: MAKE SURE CAST POT HOLDER DOES NOT TOUCH MTA CONNECTORS OR SOLDER JOINTS ON THE PC BOARD ! SEE FIGURE 7A, PAGE 8.**
- ❑ PLACE THE SLIDE POT PC BOARD ASSEMBLY ON CAST POT HOLDER AS SHOWN. **NOTE: ALIGN THE SLIDE POT LEVER INSIDE THE HORSESHOE PORTION OF THE BLOWER LEVER AS SHOWN IN FIGURE 5a.**
- ❑ SECURE THE PC BOARD AND CAST POT HOLDER TO THE BRACKET AS SHOWN USING (2) #8 x 1.25" SELF TAPPING SCREWS AND NYLON CUP WASHERS. SEE FIGURE 5. **(DO NOT OVER TIGHTEN, TIGHTEN JUST ENOUGH TO KEEP THE NYLON WASHERS FROM TURNING.)**
- ❑ REPEAT STEPS OF MODE LEVER (SHOWN ASSEMBLED) IN FIGURE 5 BELOW.

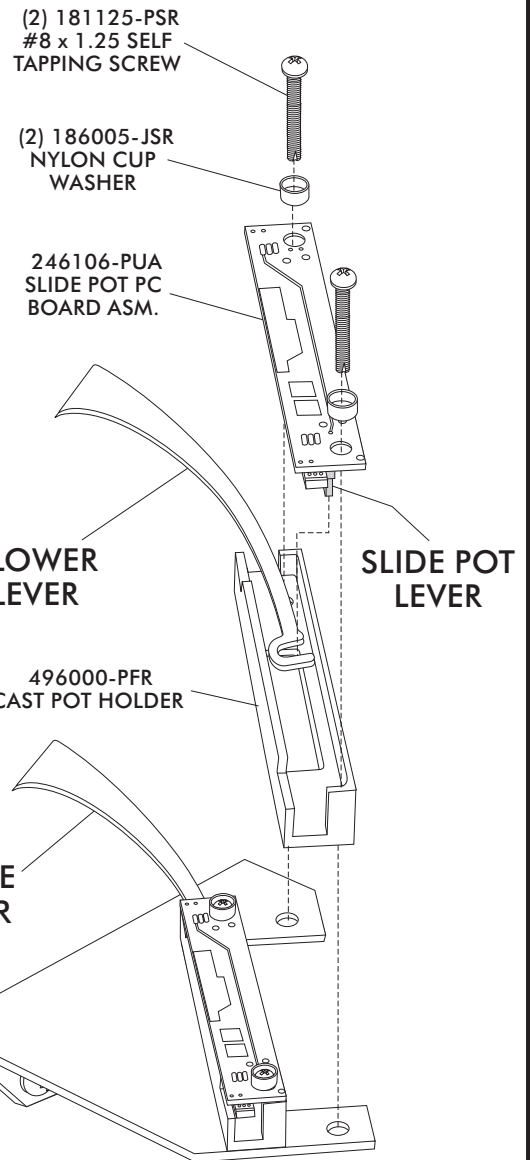
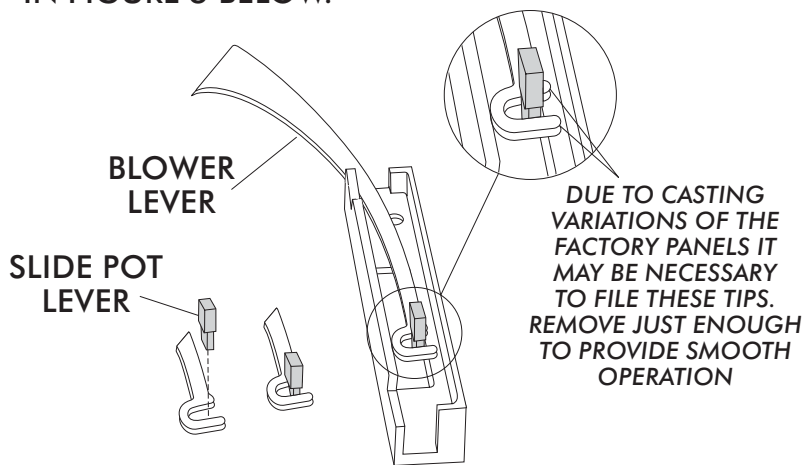
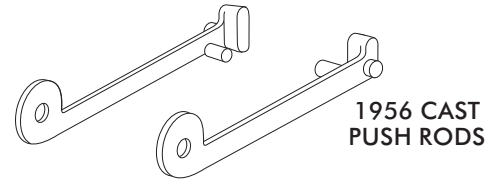
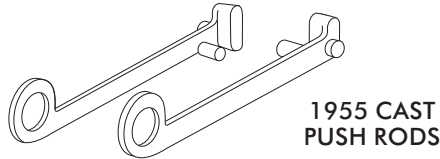


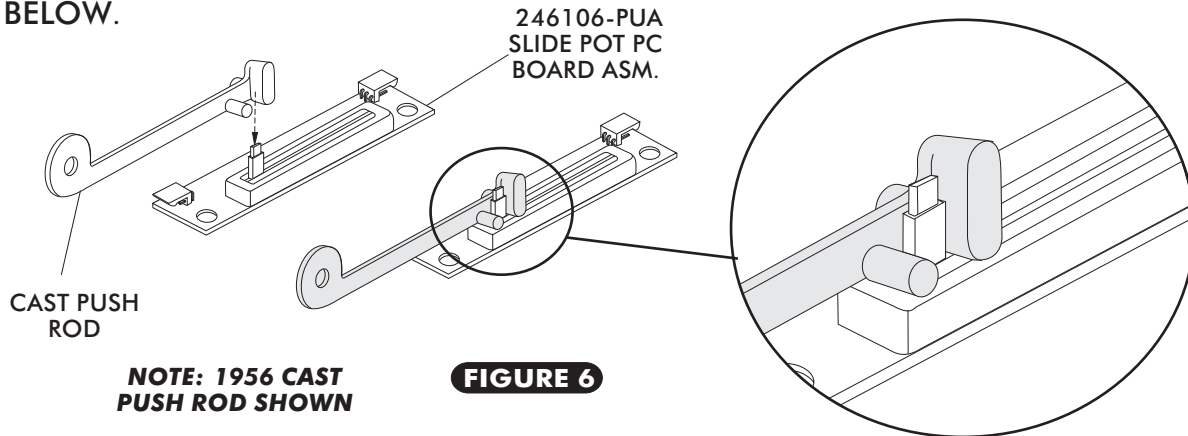
FIGURE 5

COLD & HEAT SLIDE POT ASSEMBLY

NOTE: DEPENDING ON YOUR APPLICATION, INSTALL THE 1955 OR 1956 CAST PUSH RODS.

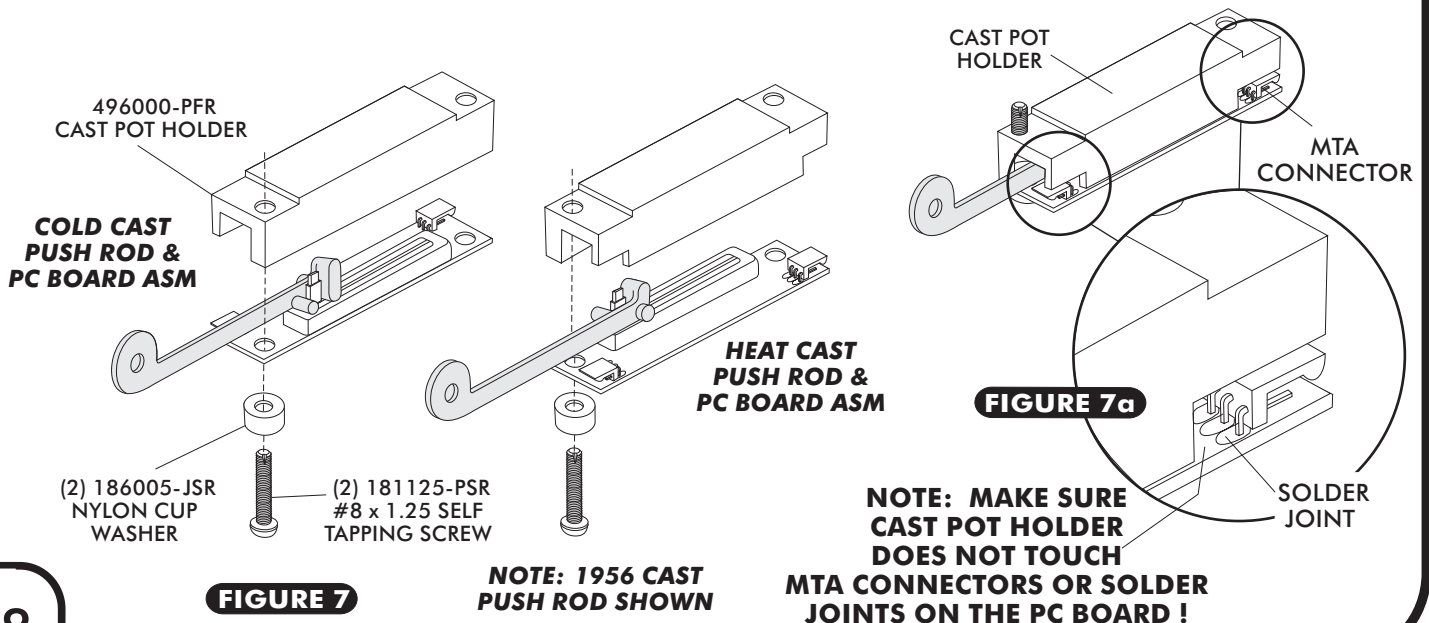


□ INSTALL CAST PUSH ROD ON TO THE PC BOARD ASSEMBLY AS SHOWN IN FIGURE 6 BELOW.



□ INSTALL THE PC BOARD AND CAST POT HOLDER AS SHOWN USING A #8 x 1.25" SELF TAPPING SCREWS AND NYLON CUP WASHER. SEE FIGURE 7 BELOW. **(DO NOT OVER TIGHTEN, TIGHTEN JUST ENOUGH TO KEEP THE NYLON WASHERS FROM TURNING.)**

NOTE: MAKE SURE CAST POT HOLDER DOES NOT TOUCH MTA CONNECTORS OR SOLDER JOINTS ON THE PC BOARD. IF THE CAST POT HOLDER TOUCHES THE MTA CONNECTORS OR THE SOLDER JOINTS ON THE PC BOARD, THE PC BOARD WILL SHORT OUT ONCE THE POWER IS TURNED ON AND CONTROLS WILL NOT FUNCTION PROPERLY. SEE FIGURE 7a BELOW.





1955 SLIDE POT INSTALLATION

- HOLDING THE COLD CAST PUSH ROD & PC BOARD ASSEMBLY TOGETHER; THREAD THE #8 x 1.25" SELF TAPPING SCREW WITH NYLON CUP WASHER INTO THE CONTROL PANEL AS SHOWN. SEE FIGURE 8. **NOTE: MAKE SURE CAST POT HOLDER DOES NOT TOUCH MTA CONNECTORS OR SOLDER JOINTS ON THE PC BOARD.**

REPEAT STEPS FOR THE HEAT PUSH ROD & PC BOARD ASSEMBLY.

- INSTALL (2) 1/16" SPACERS ON LEVERS AS SHOWN IN FIGURES 8 & 9 BELOW.
- ALIGN THE CAST POT LEVERS WITH THE CONTROL PANEL LEVERS AND SLIDE CAST POT LEVER ON TO THE CONTROL PANEL LEVER. USE OEM MACHINE SCREW WITH WASHER TO SECURE THE CAST POT LEVERS AS SHOWN. **NOTE: IF USING AFTERMARKET CONTROL PANEL USE SCREWS SUPPLIED WITH AFTERMARKET CONTROL PANEL TO SECURE CAST PUSH ROD LEVER.**

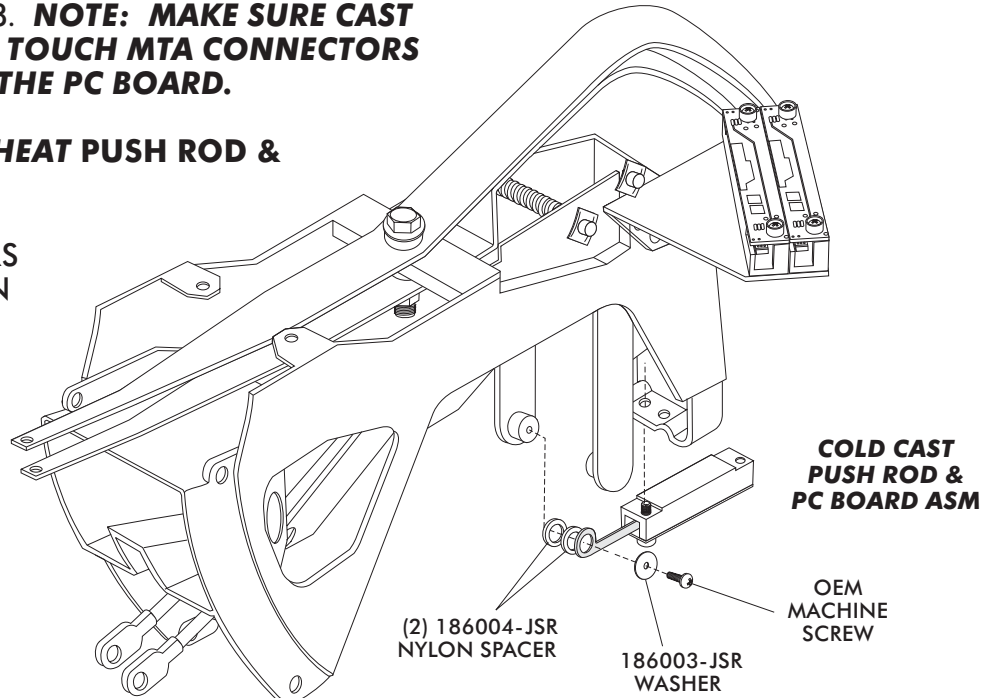


FIGURE 8

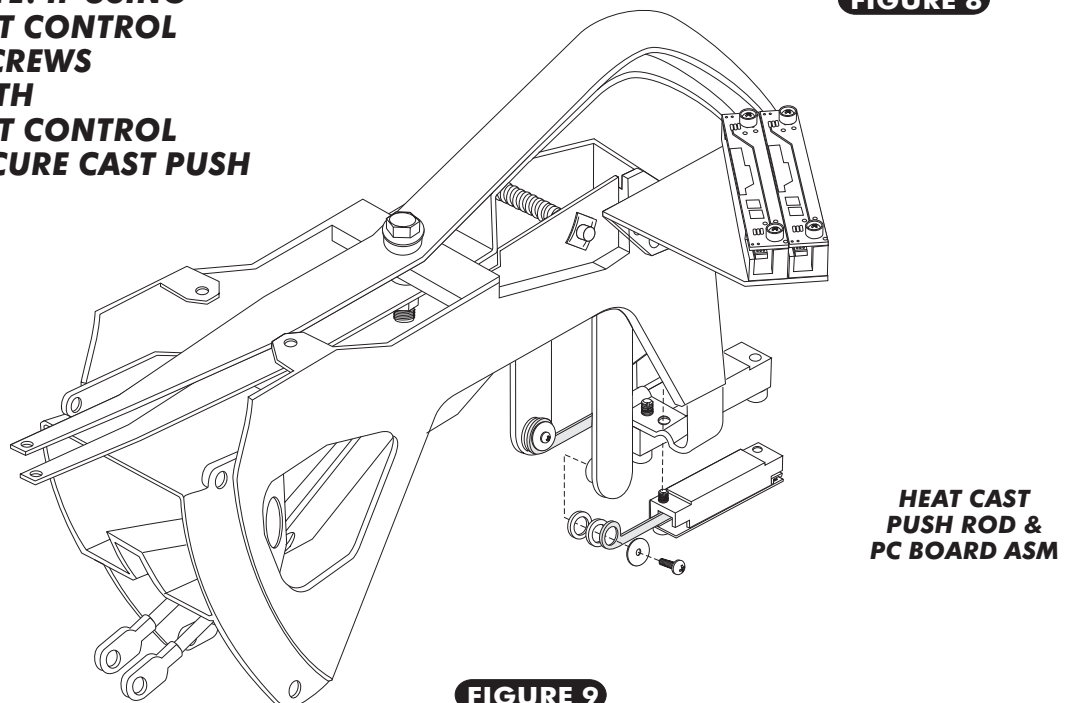


FIGURE 9



1956 SLIDE POT INSTALLATION

- HOLDING THE COLD CAST PUSH ROD & PC BOARD ASSEMBLY TOGETHER; THREAD THE #8 x 1.25" SELF TAPPING SCREW WITH NYLON CUP WASHER INTO THE CONTROL PANEL AS SHOWN. SEE FIGURE 10.

NOTE: MAKE SURE CAST POT HOLDER DOES NOT TOUCH MTA CONNECTORS OR SOLDER JOINTS ON THE PC BOARD.

REPEAT STEPS FOR THE HEAT PUSH ROD & PC BOARD ASSEMBLY.

- INSTALL 1/8" SPACERS ON LEVERS AS SHOWN IN FIGURES 10 & 11 BELOW.
- ALIGN THE CAST POT LEVERS WITH THE CONTROL PANEL LEVERS AND SLIDE CAST POT LEVER ON TO THE CONTROL PANEL LEVER. USE PUSH-ON RINGS TO SECURE THE CAST POT LEVERS AS SHOWN.

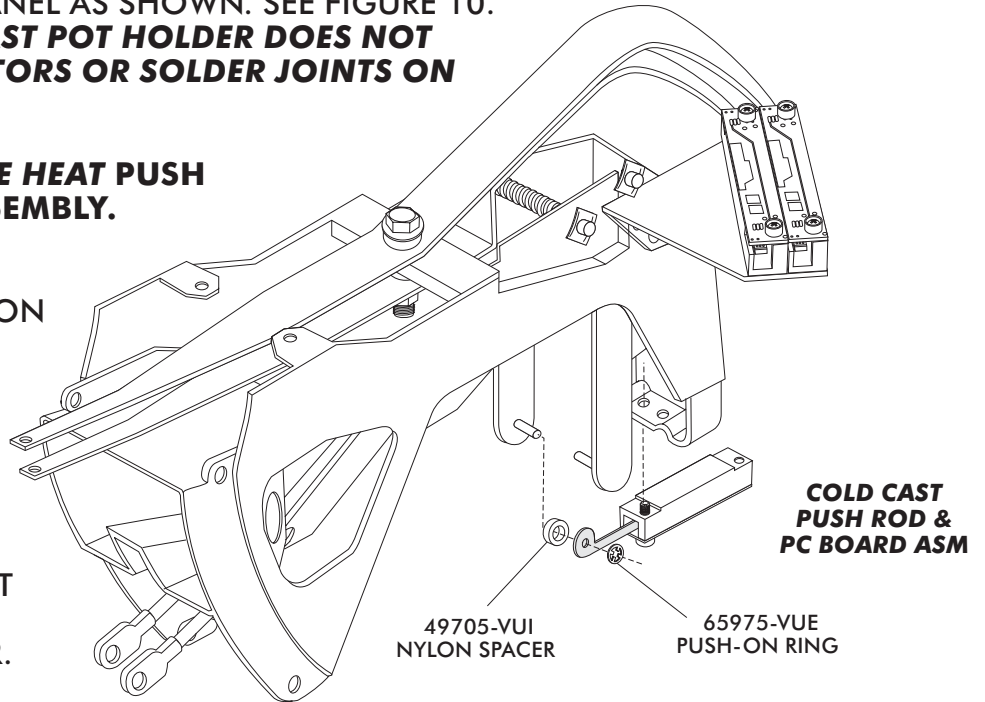


FIGURE 10

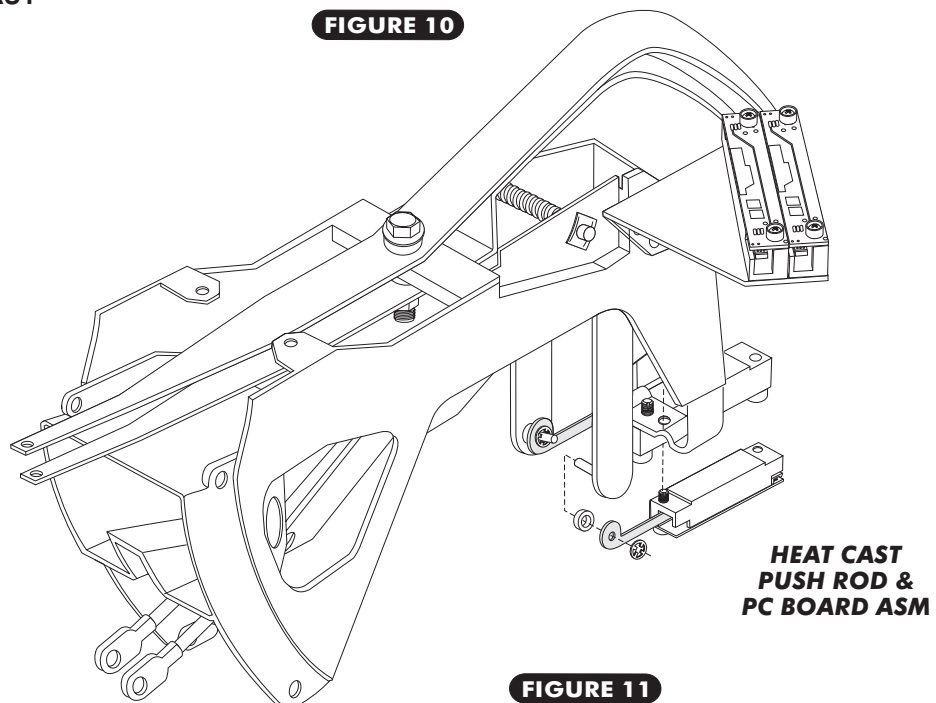


FIGURE 11



LOWER LEVER POT BRACKET INSTALLATION

- SECURE THE COLD & HEAT PC BOARD, CAST POT HOLDERS TOGETHER USING (2) #8 x 1.25" SELF TAPPING SCREWS WITH NYLON CUP WASHERS. PASS THE SCREWS WITH CUP WASHERS THROUGH PC BOARDS AND POT HOLDERS AND THREAD INTO THE LOWER POT BRACKET AS SHOWN. SEE FIGURE 12.

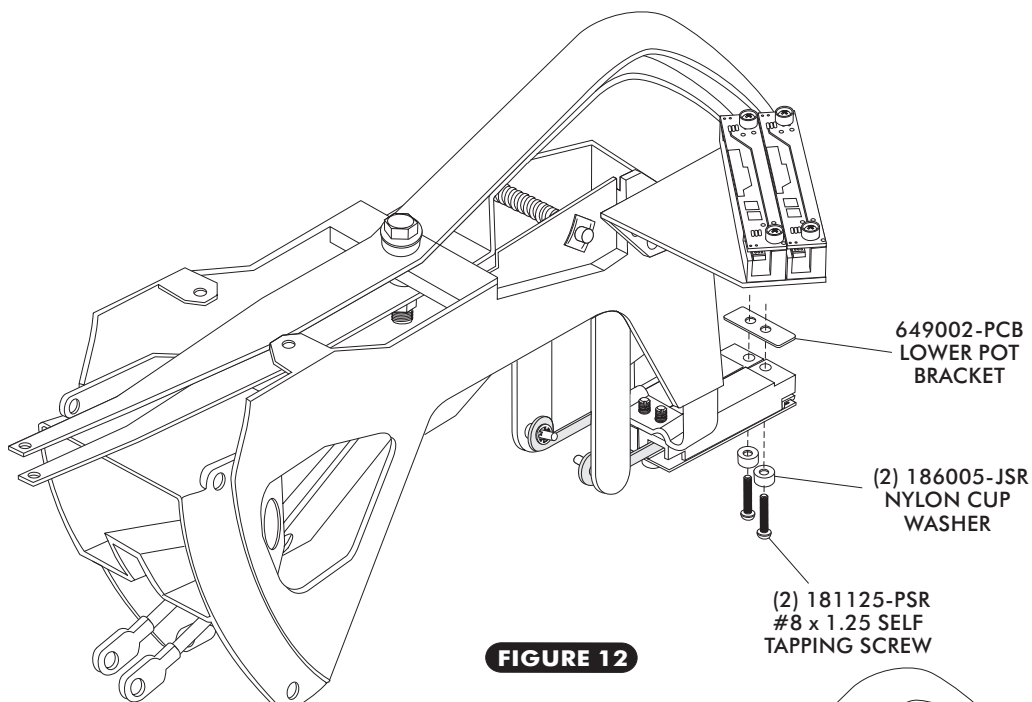


FIGURE 12

- INSTALL BEZEL AND NEW PLACARD AS SHOWN IN FIGURE 13.

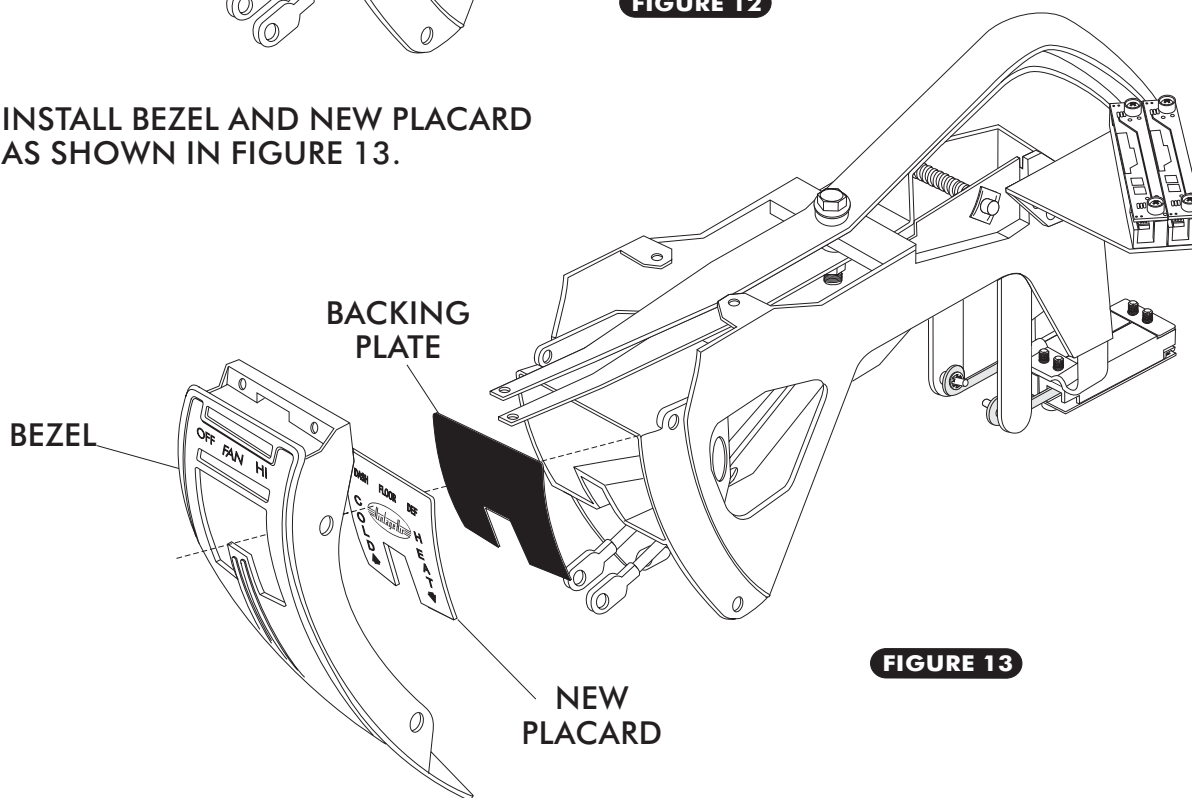


FIGURE 13



□ RE-INSTALL OEM KNOBS AS SHOWN IN FIGURE 14 BELOW.

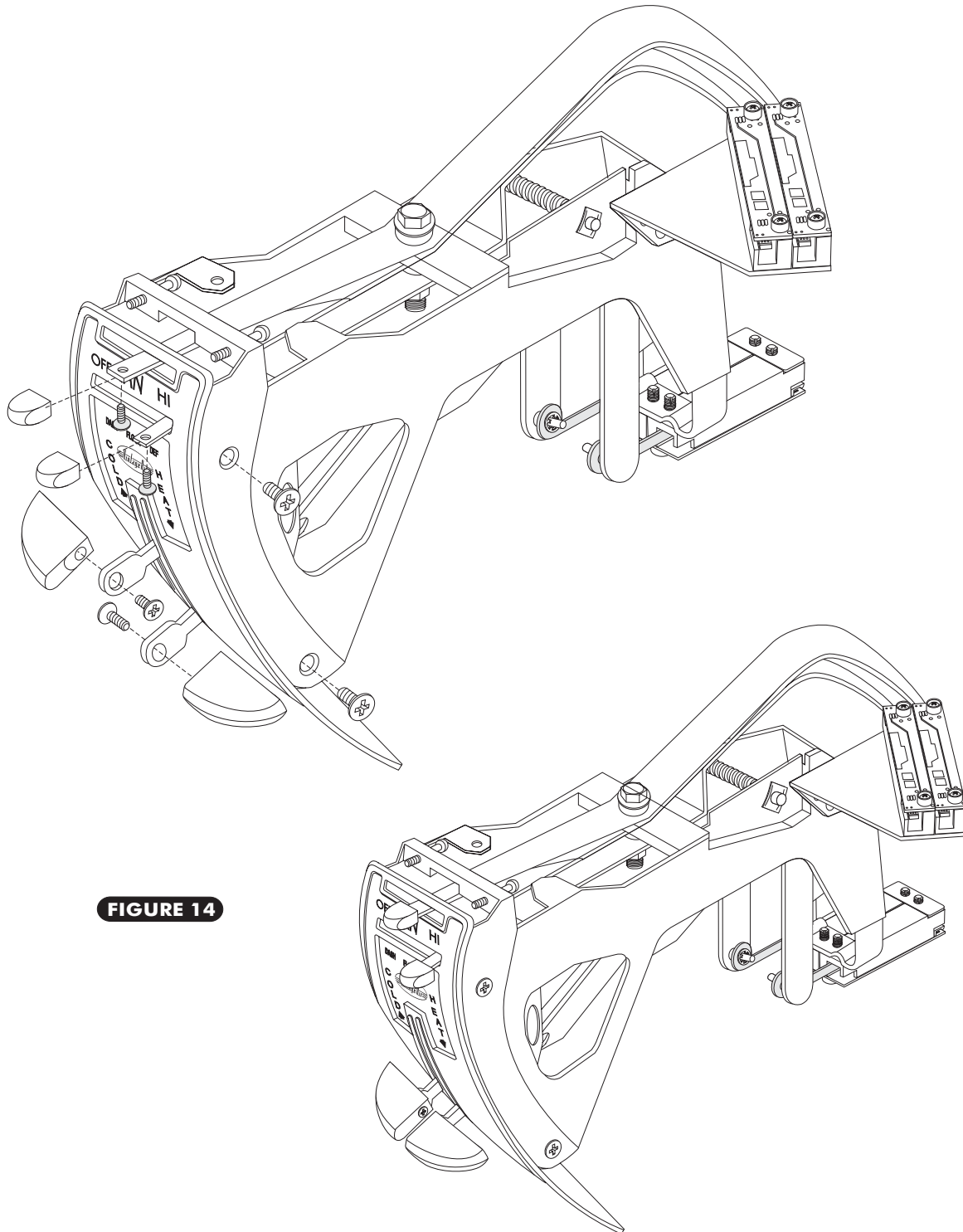


FIGURE 14



1955 & 56 CHEVY CONTROL PANEL CONVERSION

1955 & 56 CHEVY CONTROL PANEL CONVERSION PACKING LIST

CONVERSION KIT
473055-PCA

No.	QTY.	PART No.	DESCRIPTION
1.	4	496000-PFR	CAST POT HOLDER
2.	4	246106-PUA	SLIDE POT PC BOARD ASM
3.	1	491000-SLR	55 CHEVY LL/AC CAST PUSH ROD
4.	1	491001-SLR	55 CHEVY LR/HEAT CAST PUSH ROD
5.	1	649002-PCB	55-56 CHEVY LOWER POT BRKT
6.	8	181125-PSR	#8 x 1.25" SELF TAPPING SCREW
7.	8	186005-JSR	#8 NYLON CUP WASHER
8.	1	649003-PCB	55-56 CHEVY UPPER POT BRKT
9.	1	491004-SLR	55-56 CHEVY BLOWER LEVER
10.	1	491005-SLR	55-56 CHEVY MODE LEVER
11.	2	180007-SSR	NYLON SHOULDER SPACER
12.	2	180006-SSR	NYLON SPACER
13.	2	18028-VUB	5/16 FENDER WASHER
14.	1	18151-VUB	5/16-18 NYLON LKNUT
15.	1	18312-VUB	5/16-18 x 1 3/4 HEX BOLT
16.	2	49705-VUI	NYLON FLAT WASHER 1/8
17.	2	65975-VUE	1/8" PUSH ON RING
18.	6	18237-VUB	6-32 x 3/8" PAN MS
19.	6	18107-VUB	6-32 NYLON LOCKNUT
20.	1	491002-SLR	56 CHEVY LL/AC CAST PUSHROD
21.	1	491003-SLR	56 CHEVY LR/HEAT CAST PUSHROD
22.	2	186003-JSR	.141 ID x .625 OD x .031 WASHER
23.	2	186004-JSR	.44 ID x .65 OD x .125 NYLON WASHER
24.	1	48401-PCR	55-56 CHEVY PLACARD

CHECKED BY: _____
 PACKED BY: _____
 DATE: _____

