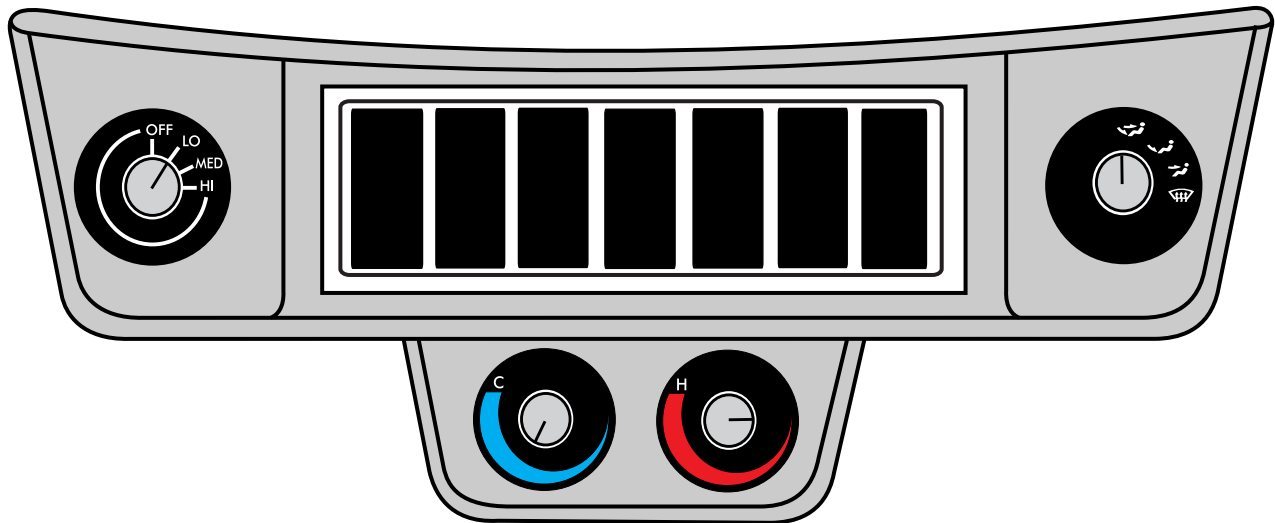




an ISO 9001:2008 Registered Company

# 1932 Ford Under Dash Pod

*with Louver Assembly*  
**(492008)**



**18865 Goll St. San Antonio, TX 78266**  
**Phone: 210-654-7171**  
**Fax: 210-654-3113**  
**[www.vintageair.com](http://www.vintageair.com)**



[www.vintageair.com](http://www.vintageair.com)

# Table of Contents

Cover.....	1
Table of Contents.....	2
Packing List/Parts Disclaimer.....	3
Control Panel Installation.....	4
Operation of Controls.....	5
Gen II ComPac & Super Wiring Diagram.....	6
Gen II Mini Wiring Diagram.....	7
Packing List.....	8



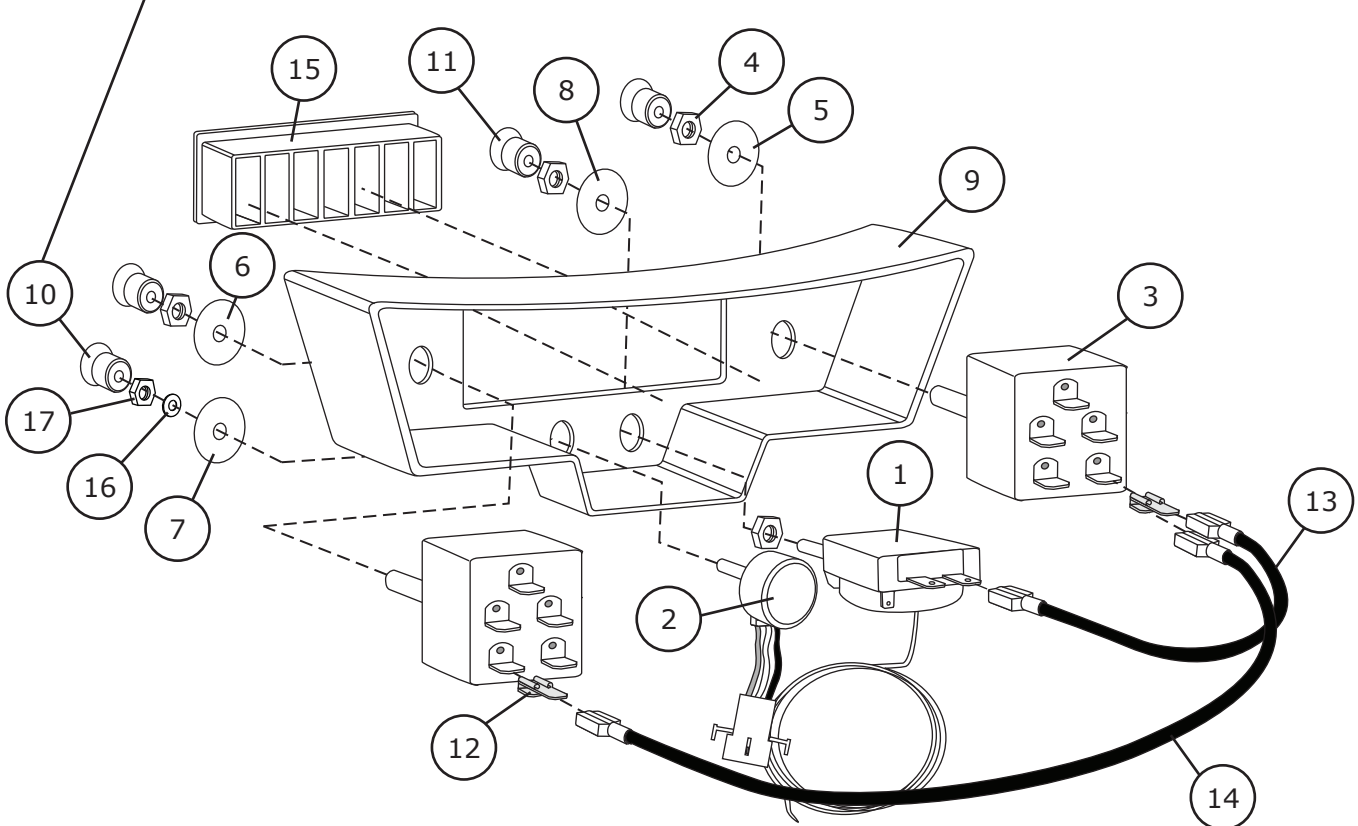
www.vintageair.com

## Packing List: Control Panel (492008)

No.	Qty.	Part No.	Description
1.	1	11092-VUT	Thermostat, 48" Adjustable Rotary
2.	1	11413-RUA	Potentiometer, Rotary
3.	2	11458-VUS	Rotary Switch, 3-Speed
4.	4	18157-VUB	Shaft Nut, 7/16"
5.	1	20558-VUP	Label, Blower Speed
6.	1	20570-VUP	Label, Mode
7.	1	20571-VUP	Label, Thermostat
8.	1	20572-VUP	Label, Heat
9.	1	472029	Bezel with Louver, Under Dash
10.	1	49219-VUI	Knob, Rotary Potentiometer
11.	3	49457-VUI	Knob, Control
12.	2	23123-VUW	Buddy Clip
13.	1	23139-VUW	Jumper Wire, 6"
14.	1	23138-VUW	Jumper Wire, 11"
15.	1	49057-VUL	Louver
16.	1	186890	Flat Washer, Potentiometer
17.	1	186892	Shaft Nut, Potentiometer

**\*\* Before beginning installation, open all packages and check contents of shipment. Please report any shortages directly to Vintage Air within 15 days. After 15 days, Vintage Air will not be responsible for missing or damaged items.**

**NOTE: The heater control valve knob is retained by a 5/64" Allen screw.**



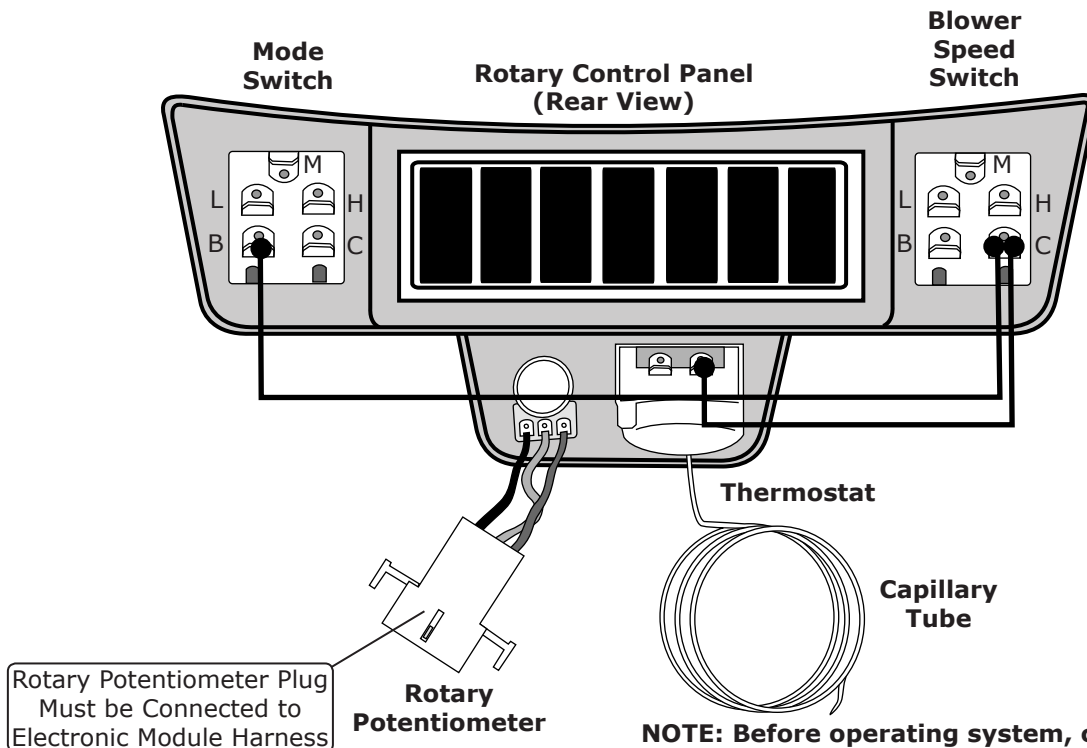
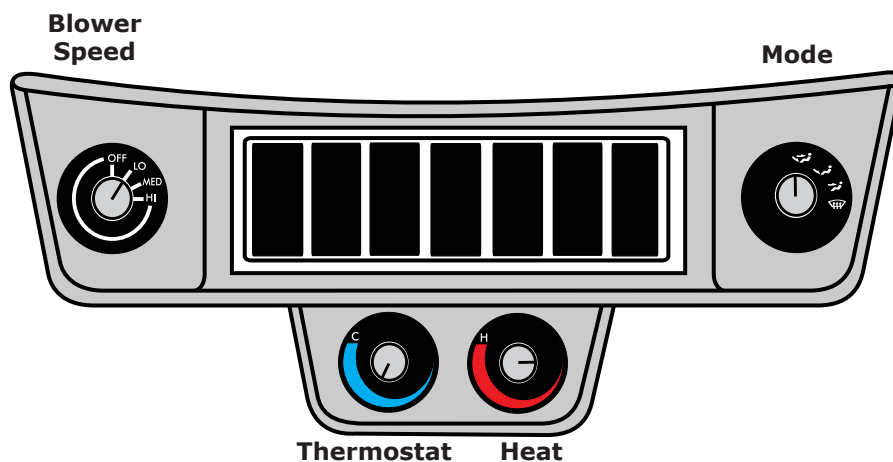
**NOTE: Images may not depict actual parts and quantities. Refer to packing list for actual parts and quantities.**



www.vintageair.com

## Control Panel Installation

1. Select a suitable location for the control panel. **NOTE: When choosing a suitable location, consider the heater control valve location, wiring harness length and the distance from the capillary tube to the evaporator unit. The panel may be mounted under the dash, or switches can be removed and installed directly in the dash.**
2. Uncoil the capillary tube from the thermostat, and insert the capillary tube into the evaporator coil to a depth of 4 1/2". **NOTE: The hole for the capillary tube is located under the blue sticker on top of the evaporator unit.**
3. Wire the system as shown on Page 6 for Gen II ComPac and Super units, or Page 7 for Gen II Mini units.

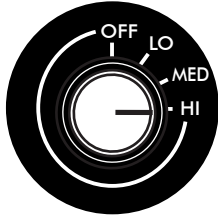


**NOTE: Before operating system, carefully uncoil capillary tube and insert it into predrilled hole on top of evaporator case (blue dot) to a depth of 4 1/2".**

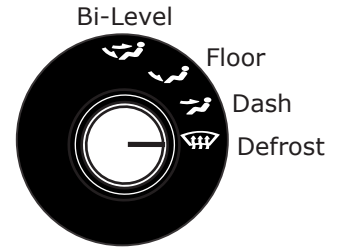


www.vintageair.com

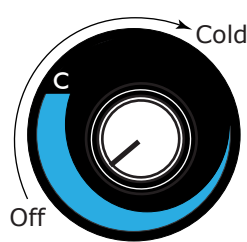
## Operation of Controls



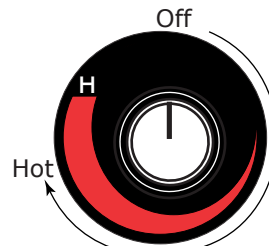
**Blower Speed**



**Mode**



**A/C Thermostat**



**Heat**

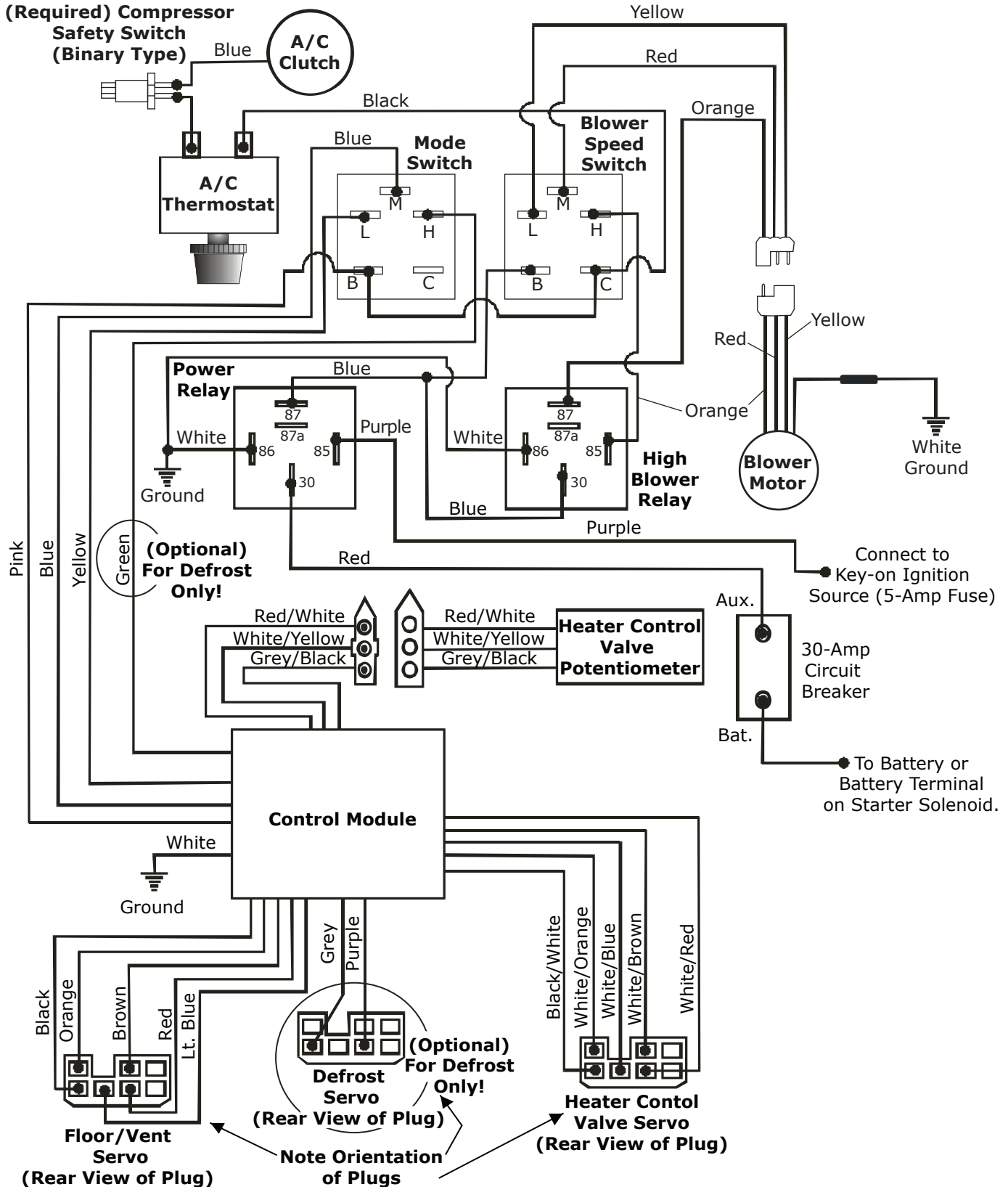
1. Any vent temperature is available in any mode.
2. Select desired mode, then adjust air temperature for comfort.
3. Heat knob adjusts flow of hot water through the heater. Counterclockwise is off. Clockwise is for increasing heat.
4. A/C thermostat knob controls the evaporator coil temperature. Counterclockwise is off. Full clockwise is maximum cold (28°).
5. For A/C operation, rotate thermostat clockwise to its stop, then back off slightly (1/8 turn) to prevent coil freeze-up. To warm up vent temperature during A/C operation, slightly increase the heat knob setting.
6. For heat operation, rotate thermostat counterclockwise to its stop (off), then adjust heat knob for desired temperature.
7. For defrost operation, adjust A/C thermostat to 3/4 cold, then adjust heat knob to attain proper temperature for de-fog/defrost.



www.vintageair.com

# Wiring Diagram:

## Gen II ComPac/Super Units—Heat/Cool/Defrost

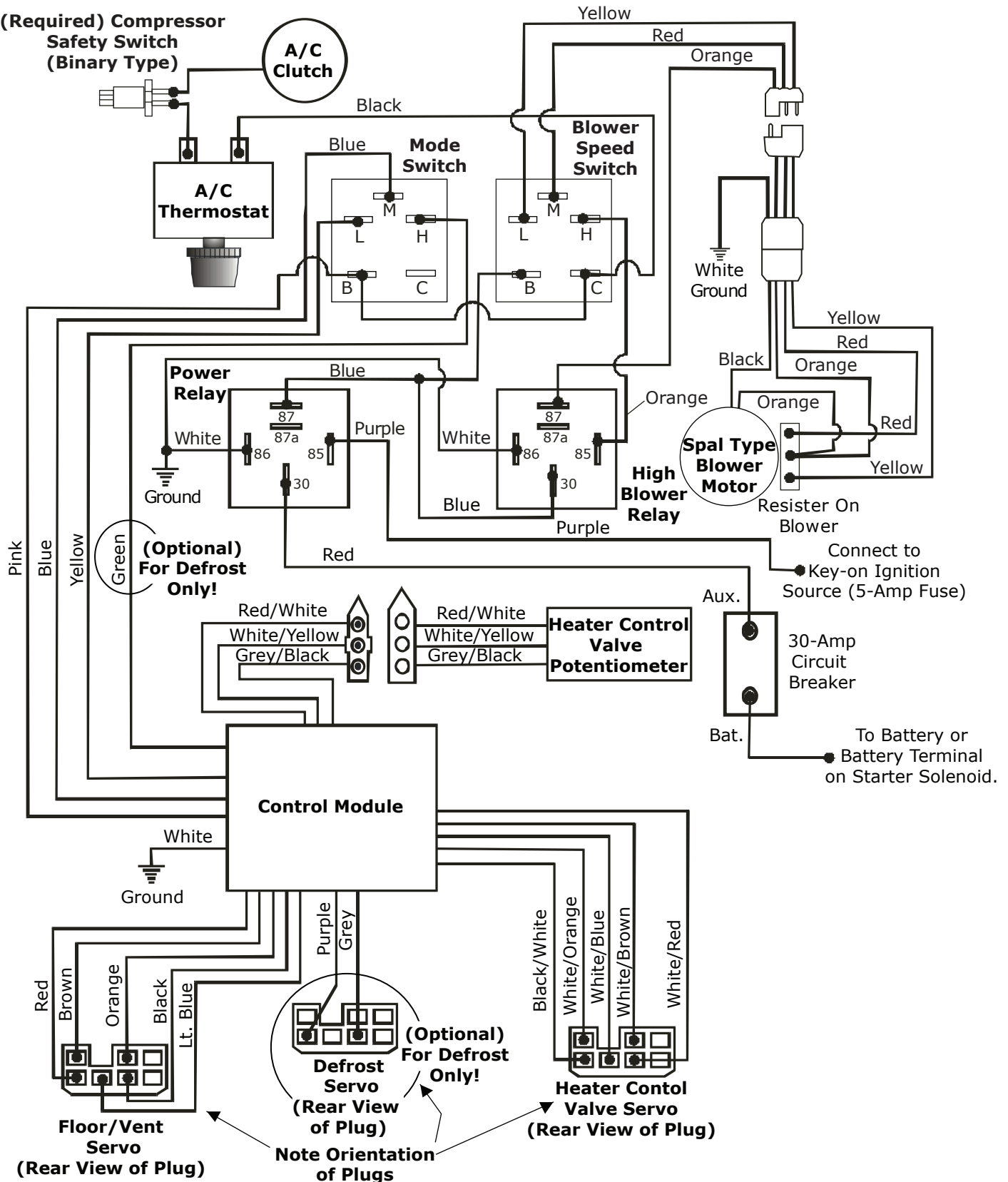




www.vintageair.com

# Wiring Diagram: Gen II Mini Units—Heat/Cool/Defrost

(Required) Compressor Safety Switch (Binary Type)





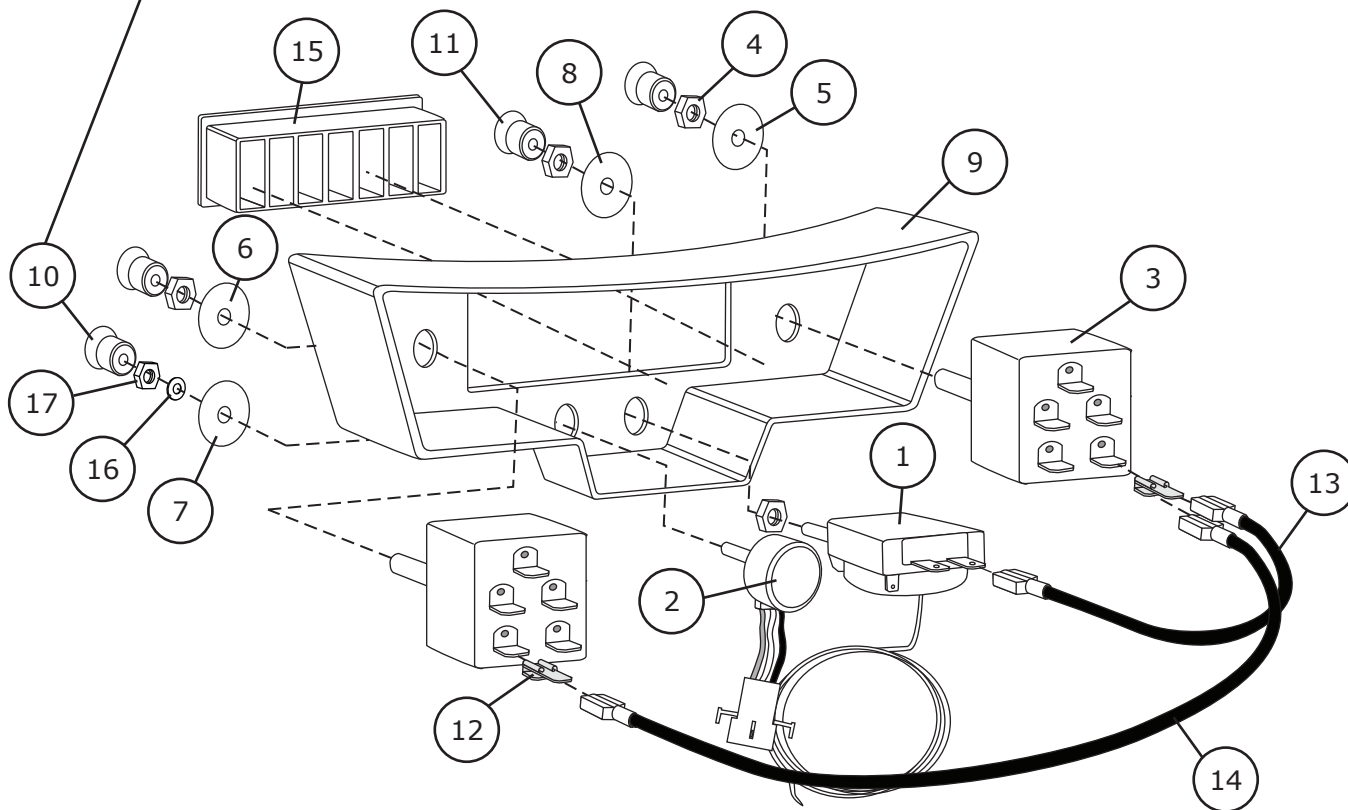
www.vintageair.com

# Packing List: Control Panel (492008)

No.	Qty.	Part No.	Description
1.	1	11092-VUT	Thermostat, 48" Adjustable Rotary
2.	1	11413-RUA	Potentiometer, Rotary
3.	2	11458-VUS	Rotary Switch, 3-Speed
4.	4	18157-VUB	Shaft Nut, 7/16"
5.	1	20558-VUP	Label, Blower Speed
6.	1	20570-VUP	Label, Mode
7.	1	20571-VUP	Label, Thermostat
8.	1	20572-VUP	Label, Heat
9.	1	472029	Bezel with Louver, Under Dash
10.	1	49219-VUI	Knob, Rotary Potentiometer
11.	3	49457-VUI	Knob, Control
12.	2	23123-VUW	Buddy Clip
13.	1	23139-VUW	Jumper Wire, 6"
14.	1	23138-VUW	Jumper Wire, 11"
15.	1	49057-VUL	Louwer
16.	1	186890	Flat Washer, Potentiometer
17.	1	186892	Shaft Nut, Potentiometer

Checked By: \_\_\_\_\_  
 Packed By: \_\_\_\_\_  
 Date: \_\_\_\_\_

**NOTE: The heater control valve knob is retained by a 5/64" Allen screw.**



**NOTE: Images may not depict actual parts and quantities.  
 Refer to packing list for actual parts and quantities.**