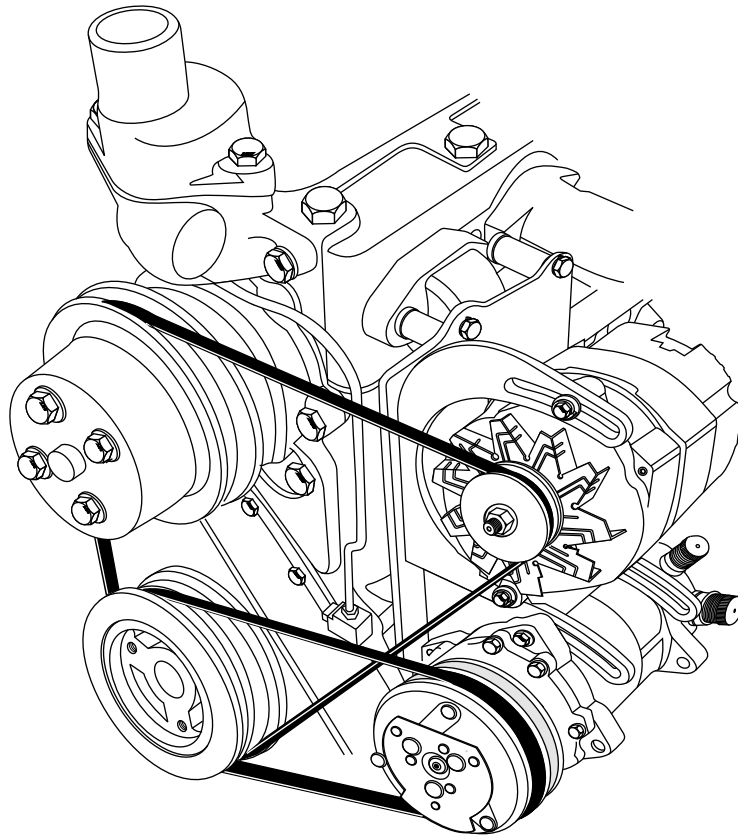




an ISO 9001: 2000 Registered Company

270 6 CYL GMC
COMPRESSOR/ALTERNATOR
BRACKET
142400



18865 GOLL ST. - SAN ANTONIO, TX. - 78266 ph.210-654-7171 - fax 210-654-3113



Table of Contents

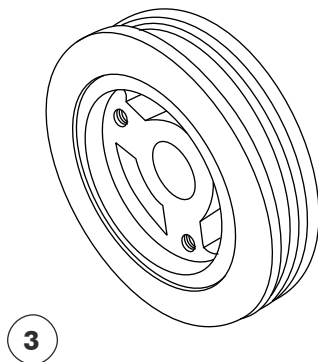
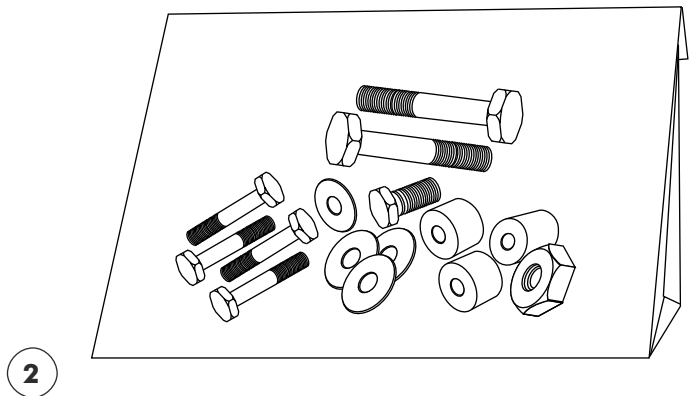
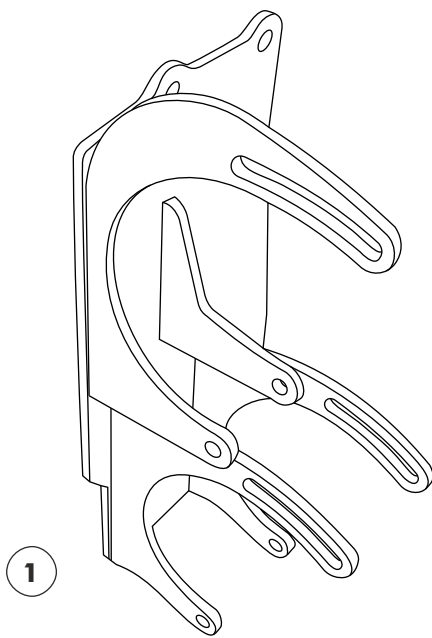
<u>PAGES</u>	
1.	COVER
2.	TABLE OF CONTENTS
3.	PACKING LIST/ PARTS DISCLAIMER
4.	INSTALLATION INSTRUCTIONS FIGURE 1
5.	COMPRESSOR/ ALTERNATOR MOUNTING BRACKET INSTALLATION FIGURE 2
6.	COMPRESSOR/ ALTERNATOR INSTALLATION CONT. FIGURES 3 & 4
7.	PACKING LIST



**BRACKET KIT
142400**

No.	QTY.	PART No.	DESCRIPTION
1.	1	146400	270 GMC COMP. & ALT MOUNTING BRKT
2.	1	191006	270 6 CYL GMC HARDWARE KIT
3.	1	732100	2 GR 6 CYL BALANCER/ PULLEY ASM

**** BEFORE BEGINNING INSTALLATION OPEN ALL PACKAGES AND CHECK CONTENTS OF SHIPMENT. PLEASE REPORT ANY SHORTAGES DIRECTLY TO VINTAGE AIR WITHIN 15 DAYS. AFTER 15 DAYS, VINTAGE AIR WILL NOT BE RESPONSIBLE FOR MISSING OR DAMAGED ITEMS.**

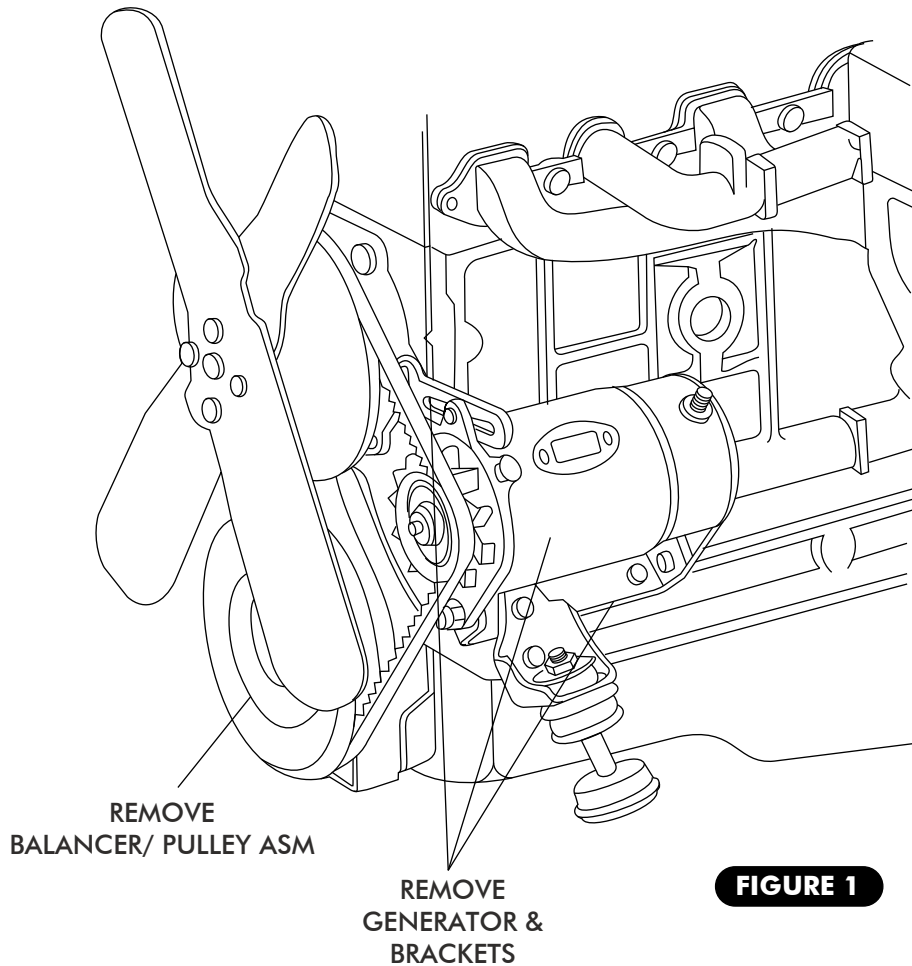


INSTALLATION INSTRUCTIONS

STUDY THE INSTRUCTIONS, ILLUSTRATIONS AND DIAGRAMS. FOR EASE OF INSTALLATION CHECK OFF (✓) EACH PROCEDURE PRIOR TO MOVING ON TO NEXT STEP.

NOTE *MAKE SURE THE ENGINE IS NOT HOT* AND RELEASE THE PRESSURE ON THE RADIATOR CAP TO PREVENT ACCIDENT OR INJURY DURING REMOVAL.

- DISCONNECT BATTERY.
- REMOVE O.E.M ENGINE FAN, FAN PULLEY AND BELTS. (RETAIN)
- REMOVE GENERATOR AND MOUNTING BRACKETS. SEE FIGURE 1
- REMOVE OEM BALANCER/ PULLEY ASM (DISCARD)





COMPRESSOR/ ALTERNATOR MOUNTING BRACKET INSTALLATION

- INSTALL COMPRESSOR/ ALTERNATOR MOUNTING BRACKET TO ENGINE USING, (5) 3/8 BOLTS w/ (5) LOCK WASHERS AND (7) SPACERS, AS SHOWN IN FIGURE 2.

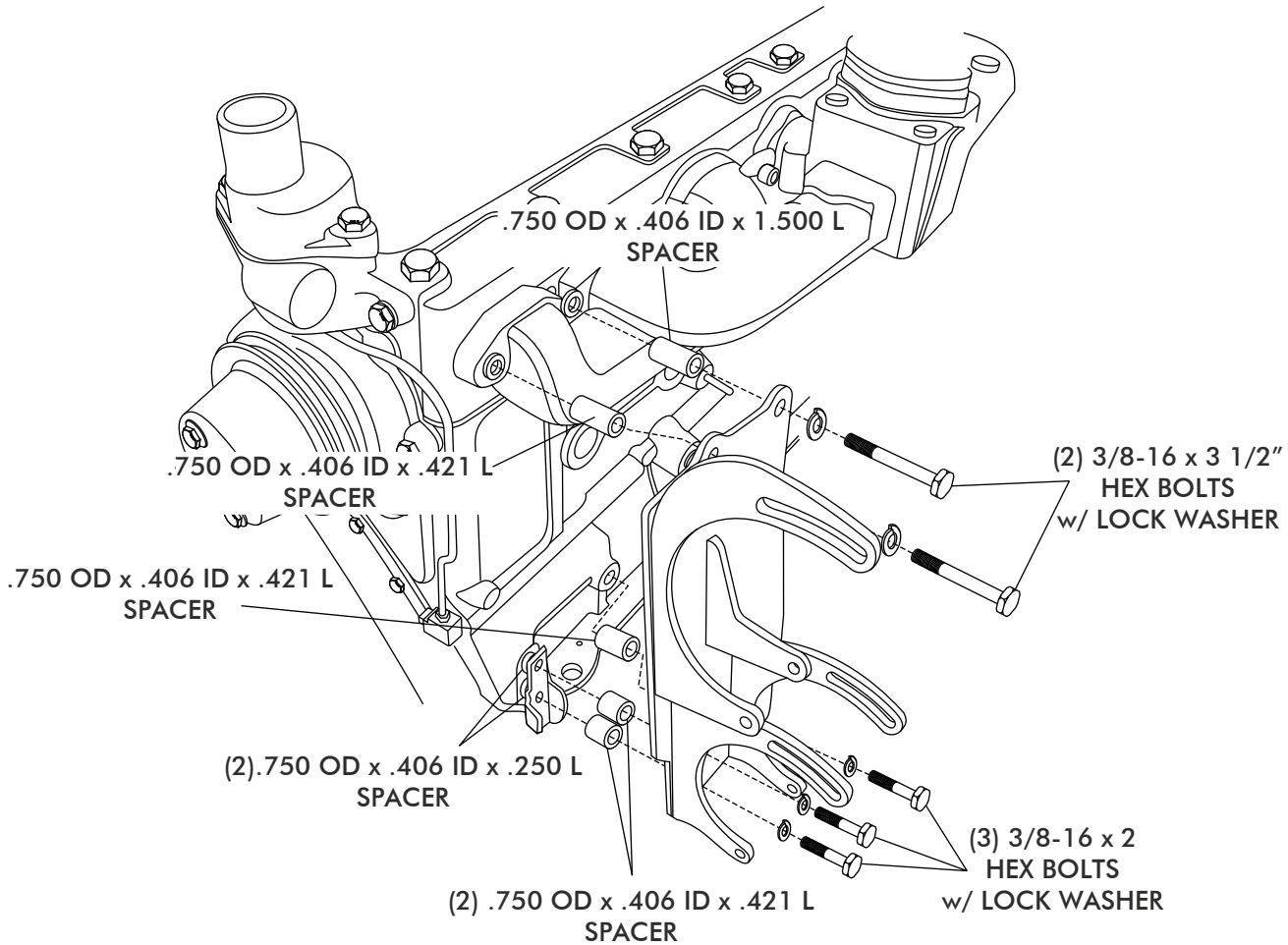


FIGURE 2

COMPRESSOR/ ALTERNATOR INSTALLATION

- INSTALL COMPRESSOR TO MOUNTING BRACKET, USING (4) 3/8-16 x 1 1/2 BOLTS w/ FLAT WASHER AND 3/8-16 LOCKNUTS, AS SHOWN IN FIGURE 3, PAGE 6.
- USING THE OEM BOLT w/ LOCK WASHER, AND 3/8 FLAT WASHER INSTALL THE TOP OF THE ALTERNATOR TO THE UPRIGHT ALTERNATOR MOUNTING BRACKET, AS SHOWN IN FIGURE 3, PAGE 6.

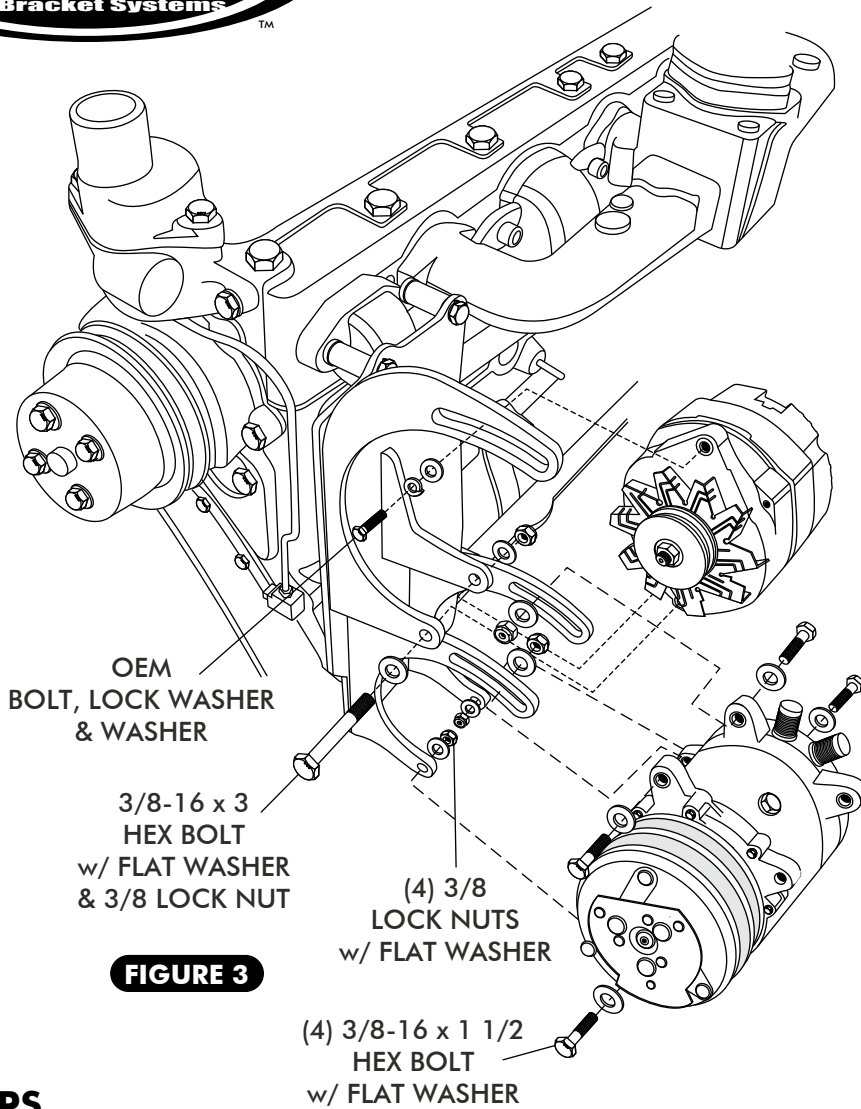


FIGURE 3

FINAL STEPS

- RE-INSTALL ENGINE FAN PULLEY AND FAN.
NOTE: VINTAGE AIR RECOMMENDS USING 18" STEEL 5 BLADE FAN.
- INSTALL 2 GR 6 CYL BALANCER/ PULLEY ASM USING OEM BOLT w/ FLAT WASHER.
- INSTALL BELTS AS SHOWN IN FIGURE 4. ADJUST TO PROPER TENSION AND TIGHTEN ALL BOLTS.
- A/C BELT 1/2 x 39 1/2" DAYCO BELT AND ALT BELT 1/2 x 50"

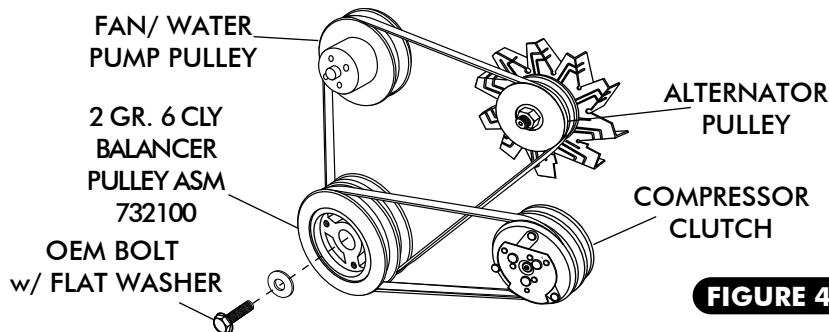


FIGURE 4

- CHECK FOR PROPER CLEARANCE BETWEEN THE COMPRESSOR, COMPRESSOR CLUTCH, MOUNTING BRACKET AND ALL HEATER HOSES AND OIL LINES. FILL UP THE RADIATOR TO REPLACE ANY FLUIDS LOST DURING THE INSTALLATION PROCESS.



**BRACKET KIT
142400**

No.	QTY.	PART No.	DESCRIPTION	CHECK LIST
1.	1	146400	270 GMC COMP. & ALT MOUNTING BRKT	_____
2.	1	191006	270 6 CYL GMC HARDWARE KIT	_____
3.	1	732100	2 GR 6 CYL BALANCER/ PULLEY ASM	_____

CHECKED BY: _____
 PACKED BY: _____
 DATE: _____

