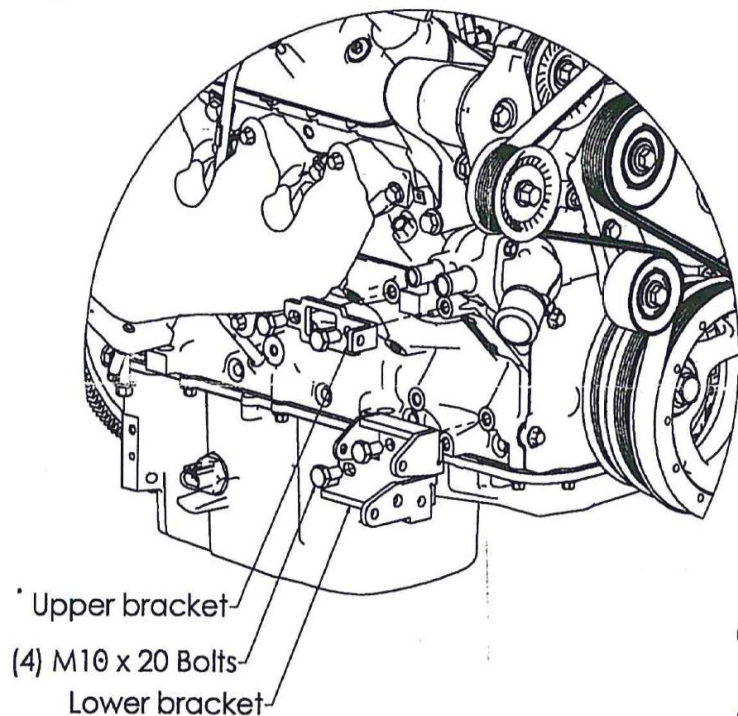


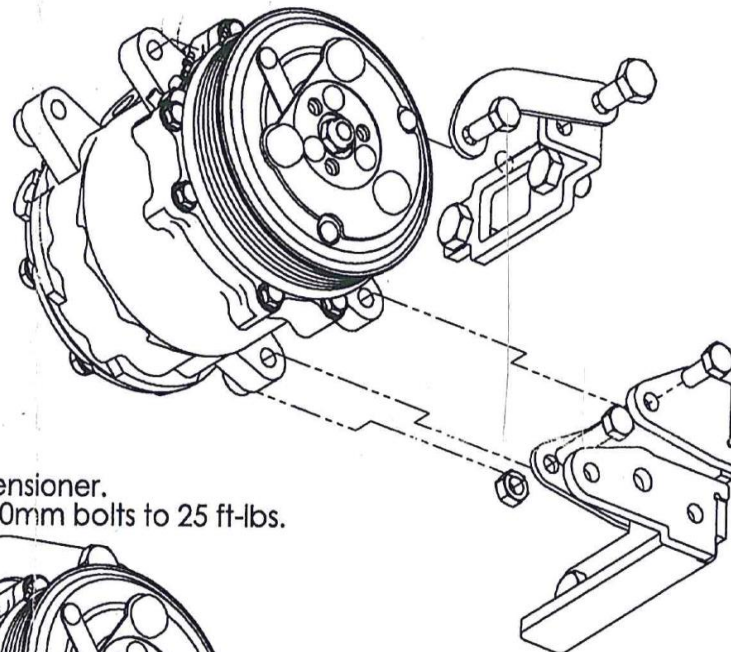
K10355  
Sanden SD7 model 7176 AC  
Low-mount Bracket  
for Corvette and LSA engines



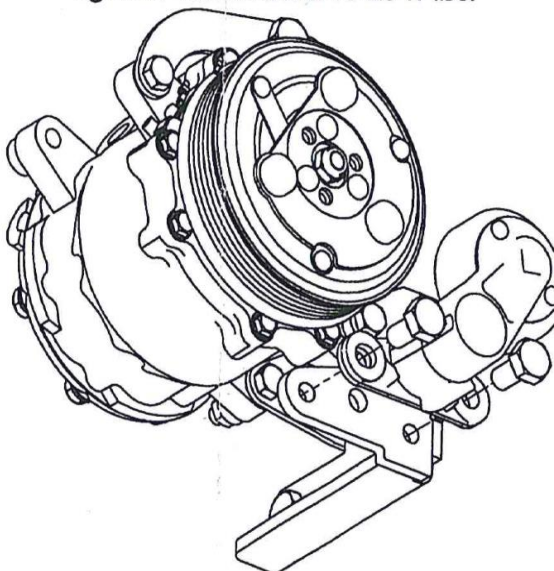
1. Bolt brackets to passenger side of block.  
Tighten 10mm bolts to 25 ft-lbs.



2. Attach Sanden 7176 compressor.  
Do not use Sanden 508 style.  
Tighten 10mm bolts to 25 ft-lbs.  
Tighten 8mm bolts to 15 ft-lbs.



3. Attach tensioner.  
Tighten 10mm bolts to 25 ft-lbs.



4. Install belt. Gates K040398  
(40.38") is suggested.