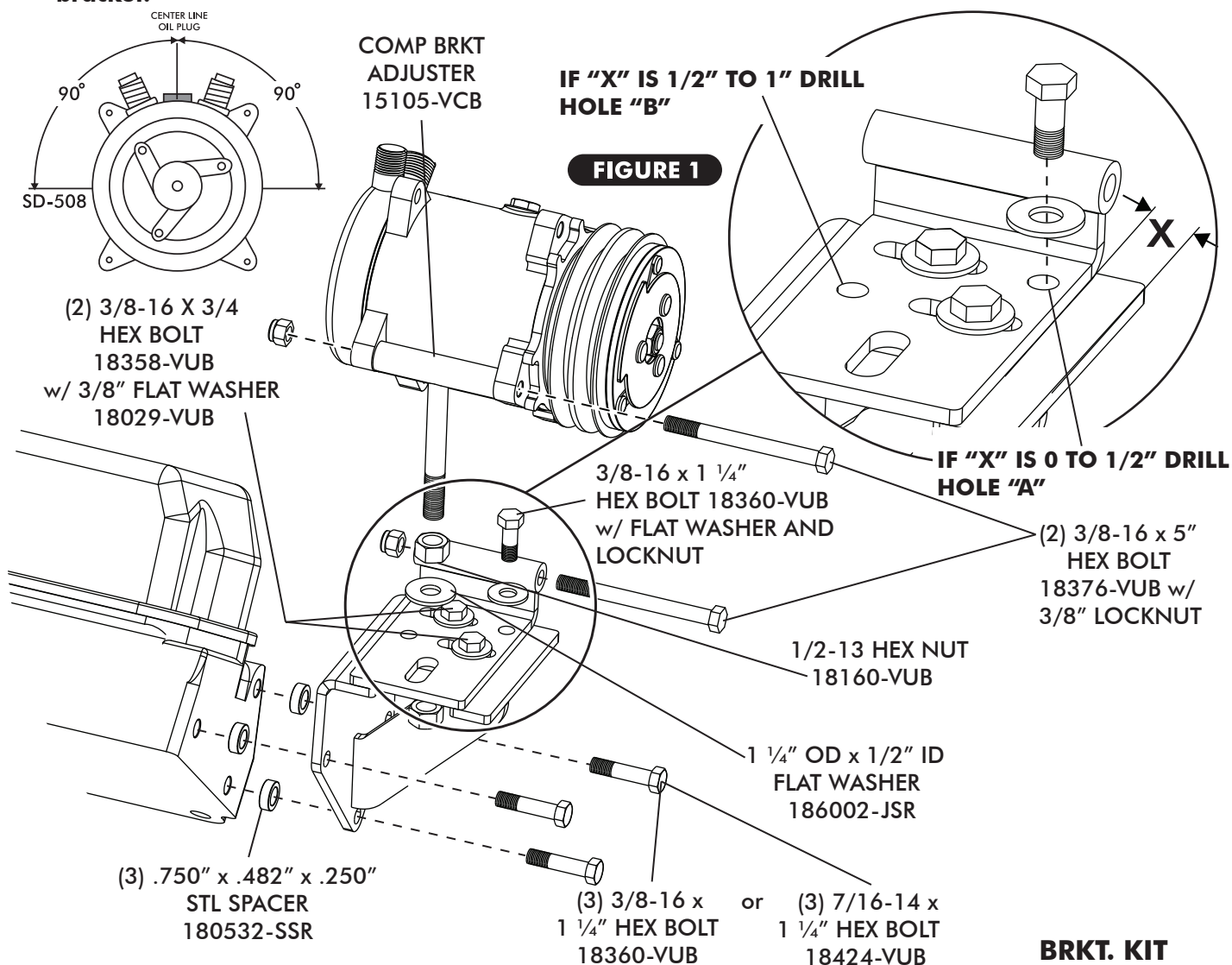


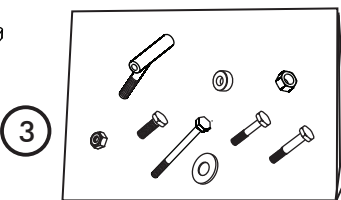
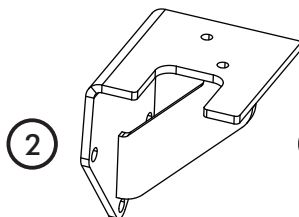
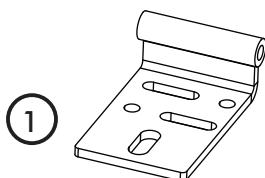
- Install the compressor bracket and compressor as shown below. Some Ford heads have 3/8" holes and some have 7/16". Both 3/8" and 7/16" bolts are furnished in this kit. If your head uses 7/16" bolts, it will be necessary to enlarge the (3) mounting holes in the bracket to 7/16". With the compressor bolted to the mount, slide the compressor until one of the grooves on the clutch aligns with your pulleys. Then, tighten the (2) bolts locking it in place. It will be necessary to drill a 3/8" hole as shown in Figure 1, below. **NOTE: It will be necessary to modify the OEM power steering bracket and/or spacer if equipped when using this bracket.**



**BRKT. KIT
131105**

289-351W DS COMP BRKT

No.	QTY.	PART No.	DESCRIPTION
1.	1	137005	289-351W DS COMP MOUNT ASM.
2.	1	137004	289-351W DS COMP BRKT ASM
3.	1	191010	289-351W DS HARDWARE KIT



CHECKED BY: _____
PACKED BY: _____
DATE: _____