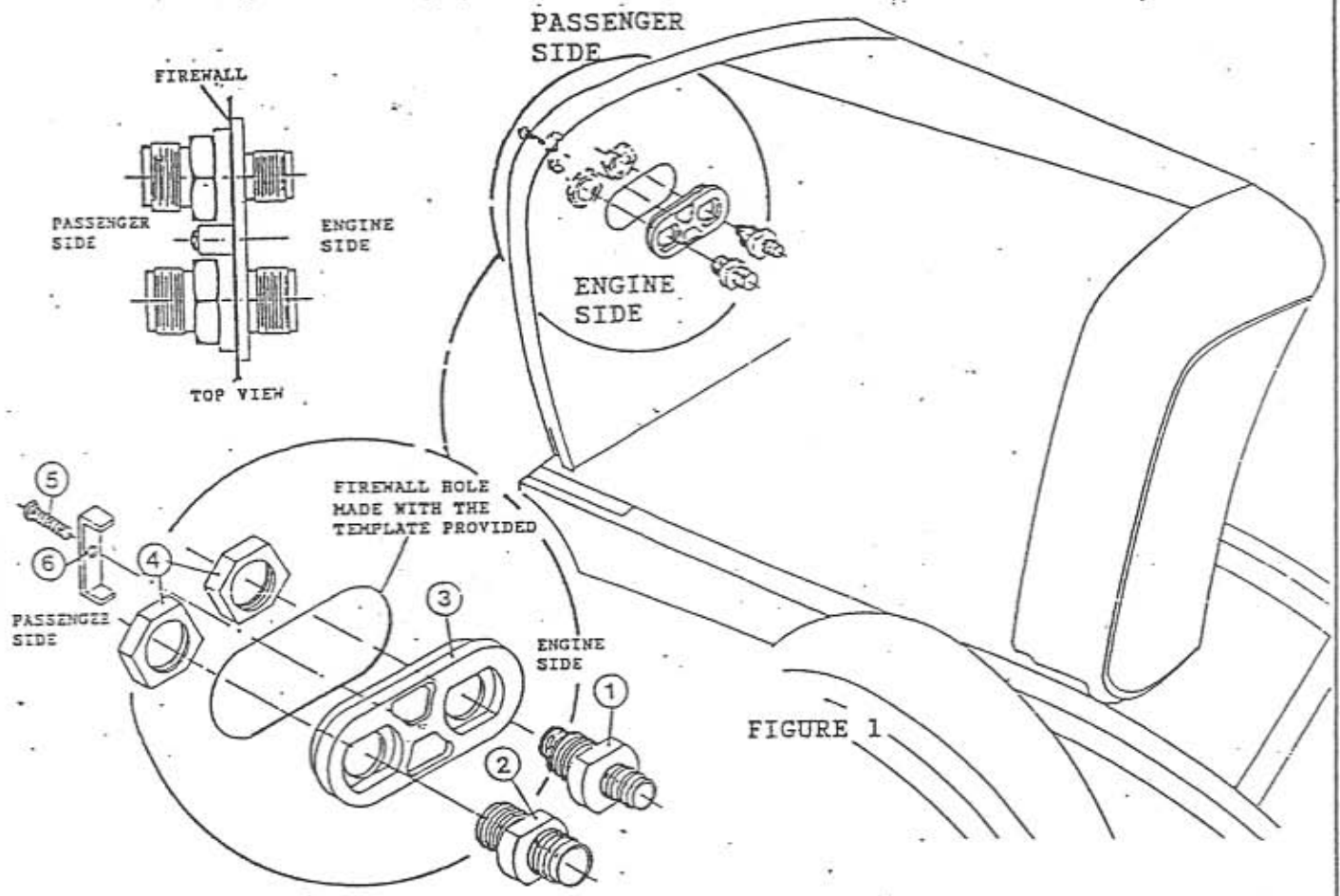


INSTALLATION INSTRUCTIONS
34215VUQ A/C BULKHEAD

INSTALL THE BULKHEAD PLATE AS FIGURE 1 SHOWS.



Make circular ends of opening with 1-1/4" hole saw. Center punch pilot hole with 1-5/8" between centers as shown. When holes are cut; snip remaining bridge for final opening. should match pattern drawn in Figure 2.

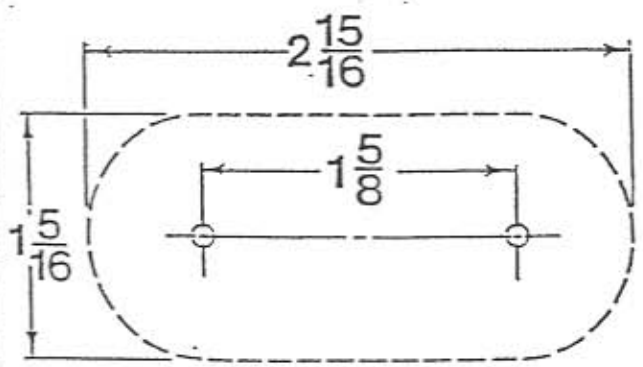


FIGURE 2

PACKING LIST

NO	QTY	PART NUMBER	DESCRIPTION
1	1	35332VUQ	#6 Bulkhead fitting
2	1	35333VUQ	#10 Bulkhead fitting
3	1	35341VUQ	Bulkhead plate
4	2	35335VUQ	#10 Nuts
5	1	18215VUB	10-24 x 1/2" Bolt
6	1	35336VUQ	Bulkhead plate rear bracket